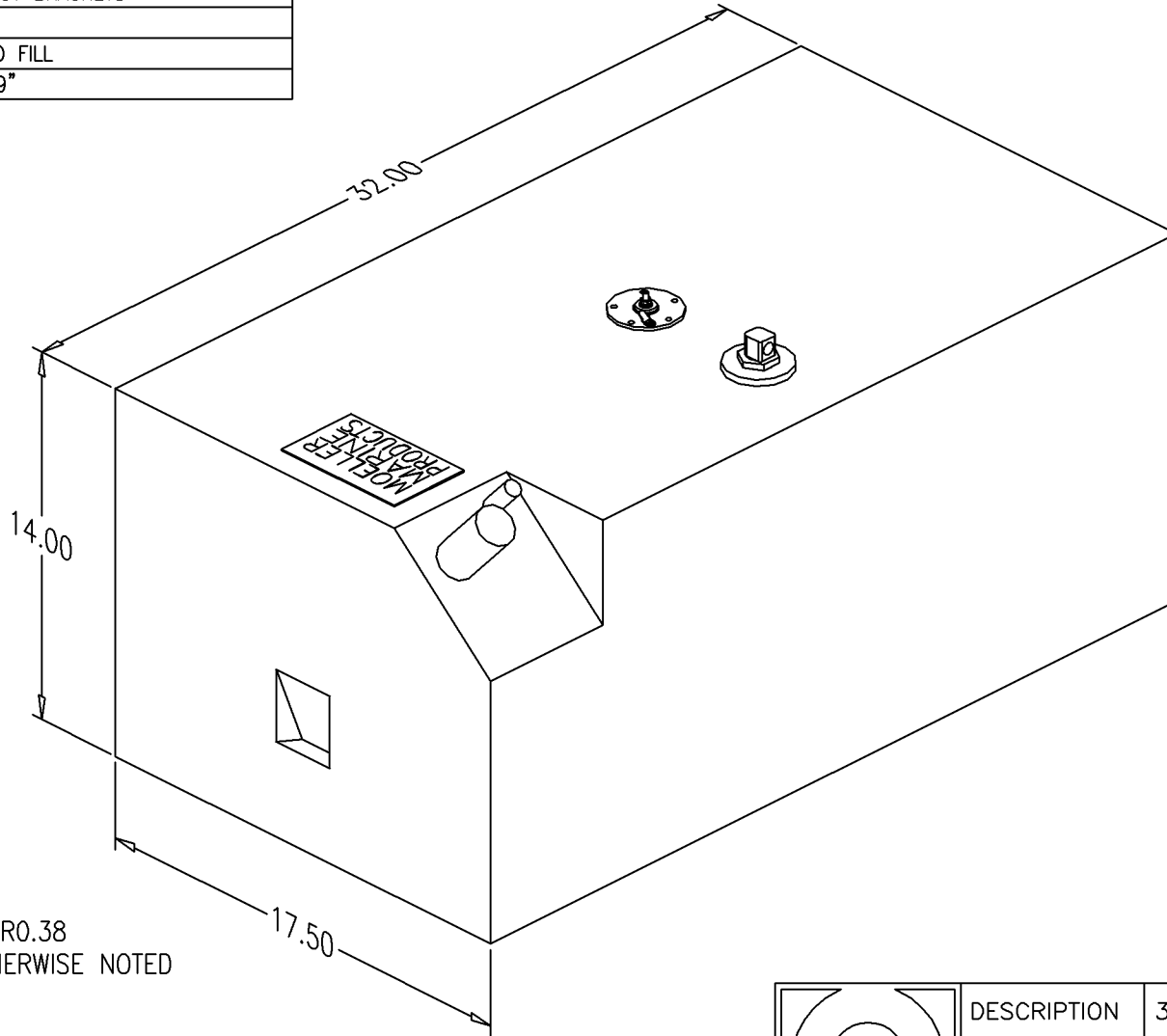


BILL of MATERIALS

Qty.	DESCRIPTION
1	ROCHESTER ROUGH RIDER SENDER
1	ALUM. PL3 PICKUP W/O BARB
2	HOOK POCKETS W/ OUT BRACKETS
1	MOLDED VENT
1	Ø1.50 X 2.75 MOLDED FILL
	OVERALL HEIGHT 15.09"

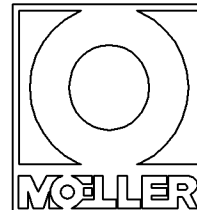
NO.	REVISION	DATE
1	REPLACE ALUMINUM FILL W/ MOLDED	6/30/09
2	REPLACE PRIME W/ ROCHESTER	2/23/10



NOTE: ALL EDGES R0.38
UNLESS OTHERWISE NOTED

PAGE 1 OF 3

THIS DRAWING AND THE ATTACHED DRAWINGS (AND THE DATA SHOWN THEREON) IS CONFIDENTIAL AND PROPRIETARY AND SHALL NOT BE USED, DISCLOSED TO OTHERS, REPRODUCED FOR ANY PURPOSE EXCEPT FOR QUOTATION TO OR ORDER BY MOELLER MARINE PRODUCTS, INC. AND/OR IT'S SUBSIDIARIES WITHOUT THEIR WRITTEN CONSENT TO THE USE OF SUCH DRAWINGS AND/OR DATA.



DESCRIPTION	30 GALLON FUEL TANK (032631)		
PART #	FT3199-1	COLOR	NATURAL
MATERIAL	CROSSLINK POLYETHYLENE		
TOLERANCES	±1.5% UNLESS OTHERWISE NOTED		
WALL THK.	0.200" NOMINAL	DATE	2/23/10
DRAWN BY	MOELLER ENGINEERING		

