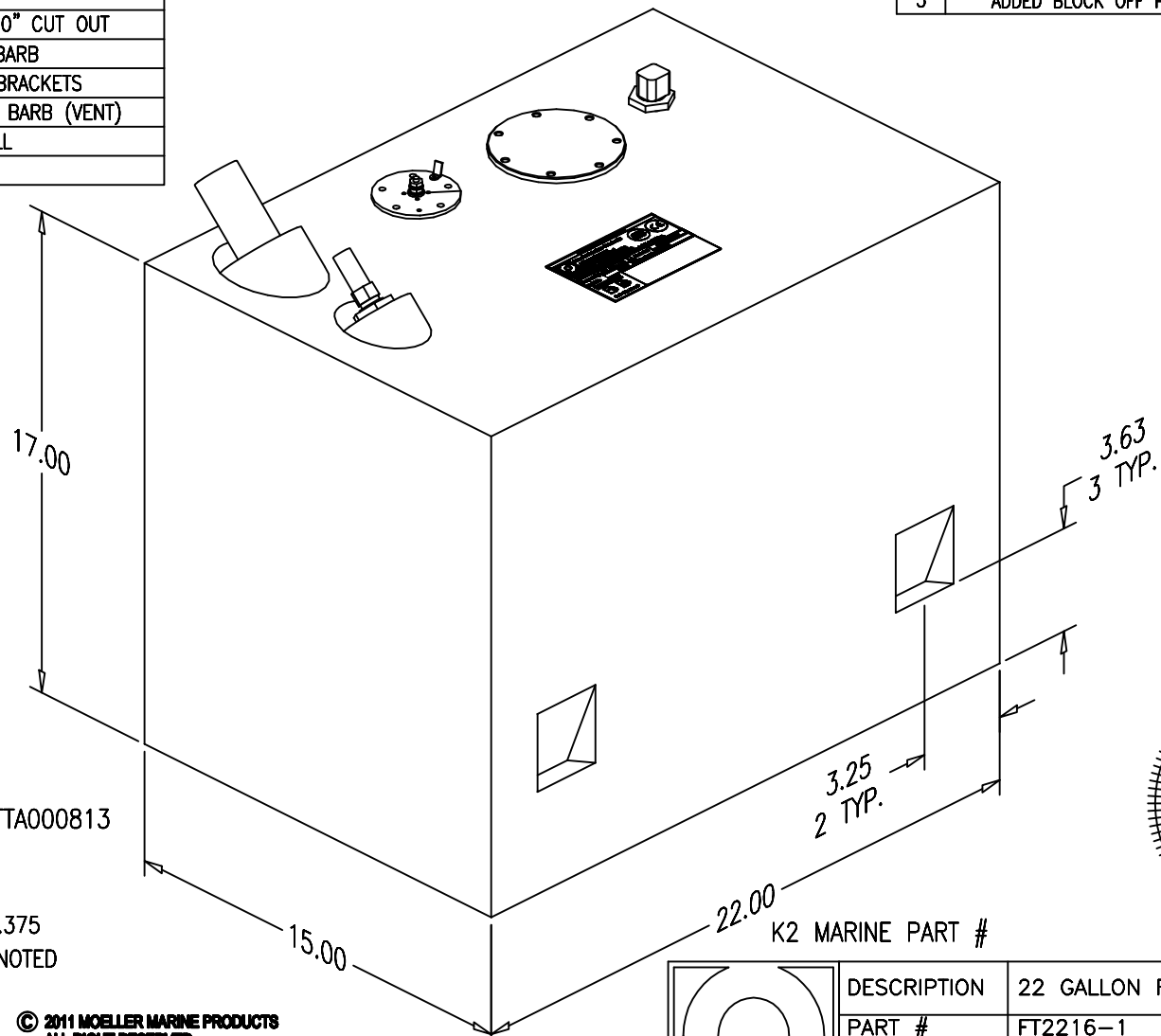


BILL of MATERIALS

Qty.	DESCRIPTION
1	ROCHESTER SENDER
1	BLOCK OFF PLATE FOR 3.0" CUT OUT
1	ALUM. PL3 PICKUP W/O BARB
3	HOOK POCKETS W/ OUT BRACKETS
1	3/8 NPT INSERT W/ 5/8 BARB (VENT)
1	Ø1.50 x 2.75 MOLDED FILL
OVERALL HEIGHT 19.72"	

NO.	REVISION	DATE
1	REPLACE ALUMINUM FILL W/ MOLDED	6/29/09
2	REPLACE PRIME W/ ROCHESTER	1/20/10
3	ADDED BLOCK OFF PLATE, UPDATED LABEL	6/27/11

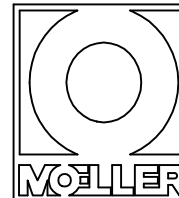


SHARES BASE WITH FTA000813

NOTE: ALL EDGES HAVE R0.375
UNLESS OTHERWISE NOTED

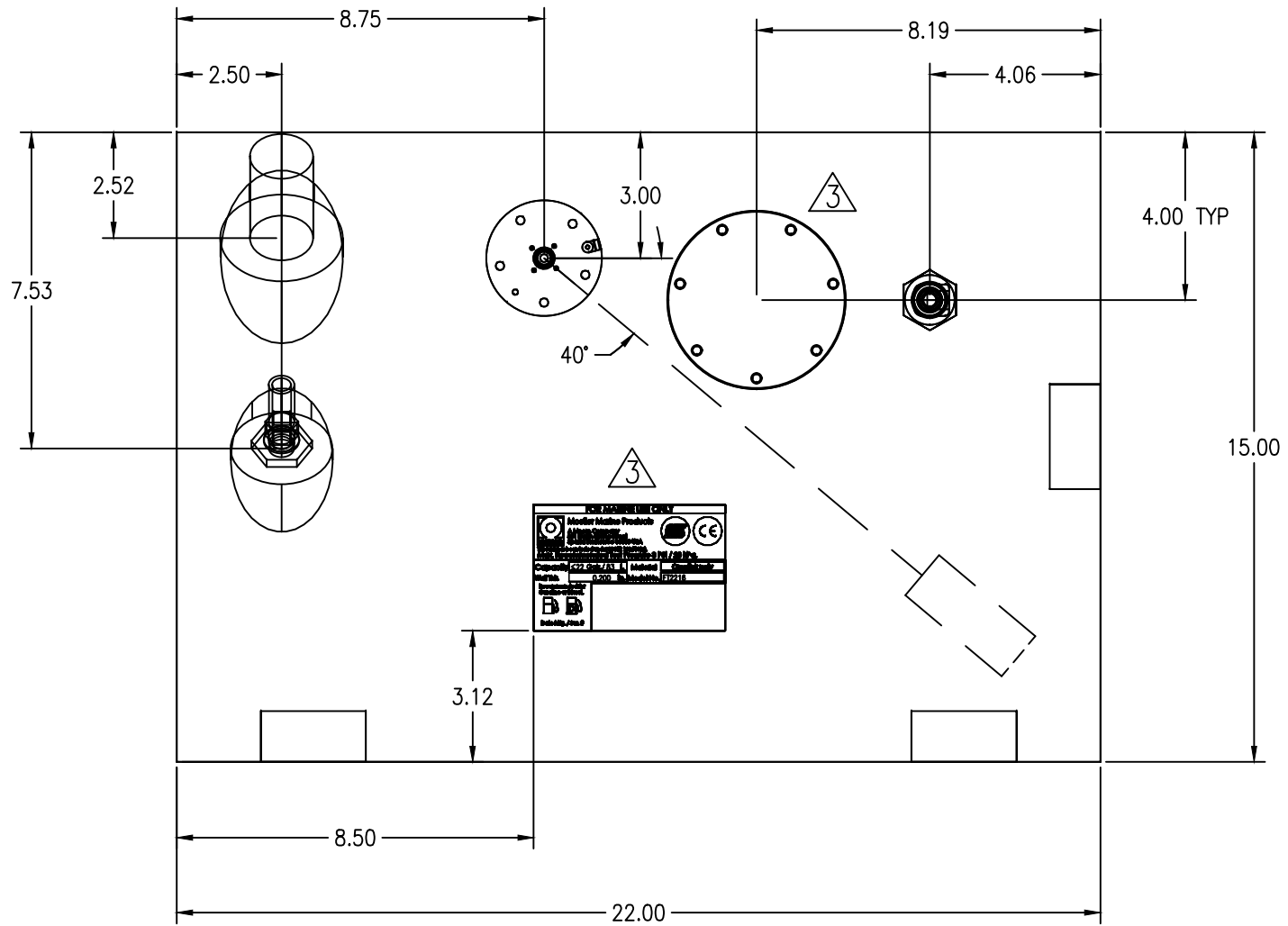
PAGE 1 OF 4

© 2011 MOELLER MARINE PRODUCTS
ALL RIGHT RESERVED

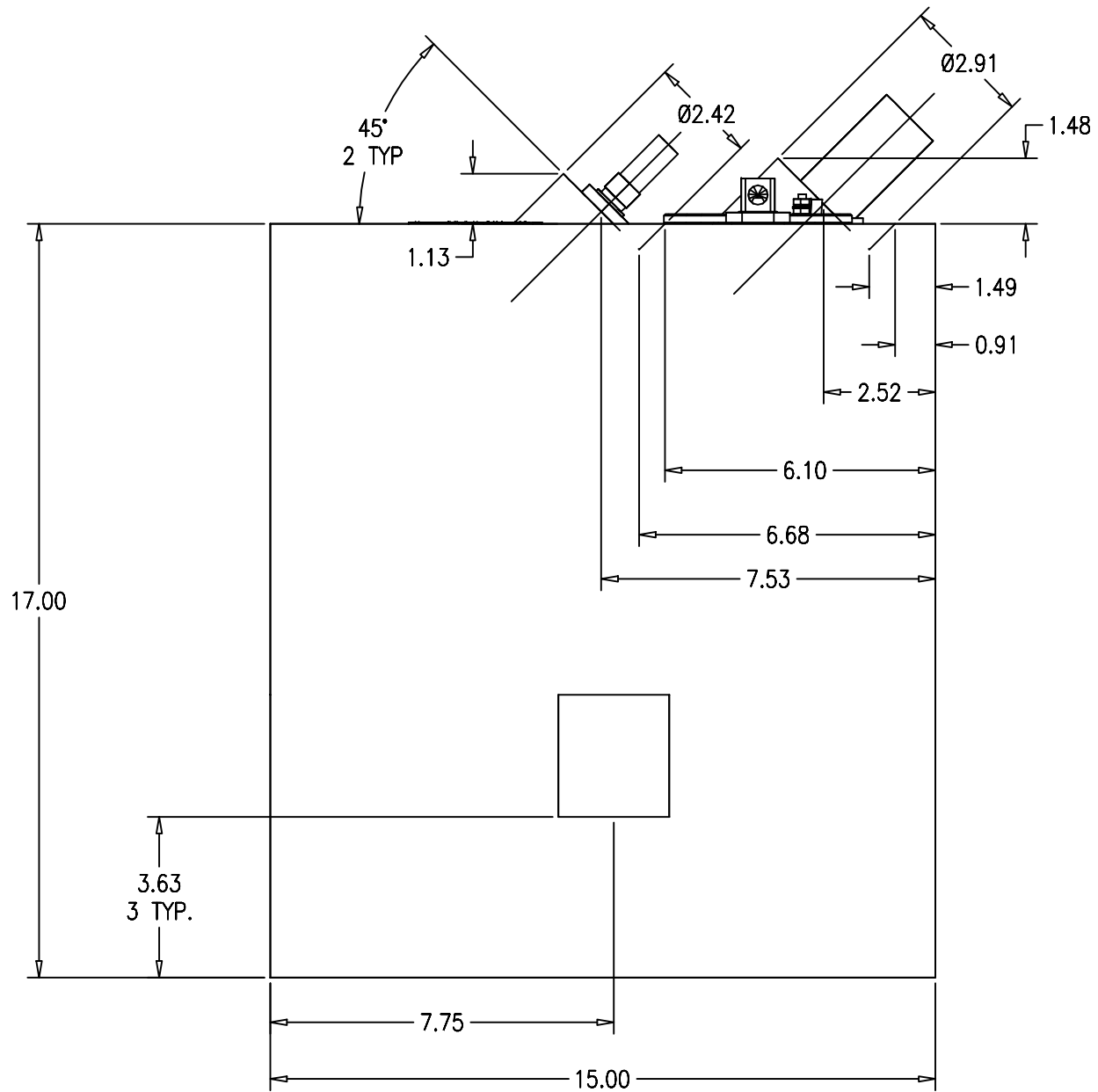


DESCRIPTION	22 GALLON FUEL TANK (032522)		
PART #	FT2216-1	COLOR	NATURAL
MATERIAL	CROSSLINK POLYETHYLENE		
TOLERANCES	±1.5% UNLESS OTHERWISE NOTED		
WALL THK.	0.200"	DATE	6/27/11
DRAWN BY	CFN		

THIS DRAWING AND THE ATTACHED DRAWINGS (AND THE DATA SHOWN THERON) IS CONFIDENTIAL AND PROPRIETARY AND SHALL NOT BE USED, DISCLOSED TO OTHERS, REPRODUCED FOR ANY PURPOSE EXCEPT FOR QUOTATION TO OR ORDER BY MOELLER MARINE PRODUCTS, INC. AND/OR IT'S SUBSIDIARIES WITHOUT THEIR WRITTEN CONSENT TO THE USE OF SUCH DRAWINGS AND/OR DATA.

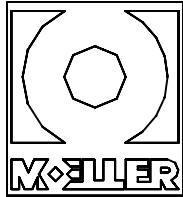


NOTE: FILL AND VENT ARE ANGLED 45° FROM HORIZONTAL



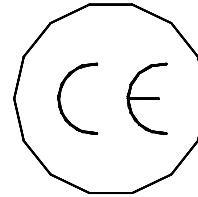
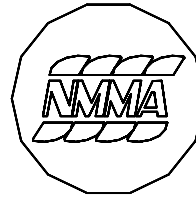
RIGHT SIDE VIEW
 6/27/11

FOR MARINE USE ONLY



Moeller Marine Products

**A Moore Company
801 North Spring Street
Sparta Tennessee 38583 USA**

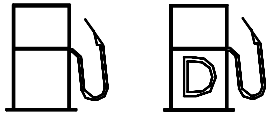


This tank has been tested under 33CFR 183.510(a).

Max. Recommended Test Pressure 3 PSI / 20 kPa.

Capacity	≤22 Gals./ 83 L	Material	Crosslink poly
Wall Thk.	0.200 in.	Model No.	FT2216

**Recommended for
Gasoline or Diesel.**



Date Mfg. / Ser. #