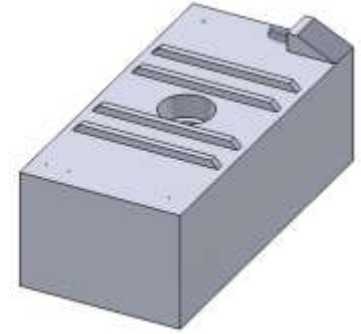


**Study Details**

**Study Number:** MMP00XX  
**Study Revision:** 0  
**Date Completed:** 11-10-2015  
**Completed By:** D. Mauck  
**Customer:** CONFIDENTIAL  
**Vessel Model:** ---  
**Vessel Length:** <26'

**Static Tip:** 1.5° Bow Up  
**Tank Part Number:** FTA000967BR  
**Tank Material:** XLPE  
**Tank Wall Thickness:** 0.235 (0.275)  
**Tank Orientation:** Fill -> Bow  
**Fuel System Type:** Pressure



**Fuel Capacity**

**100% Fill:** 58.4 gallons      **Max Allowable Fill (95%):** 55.6 gallons

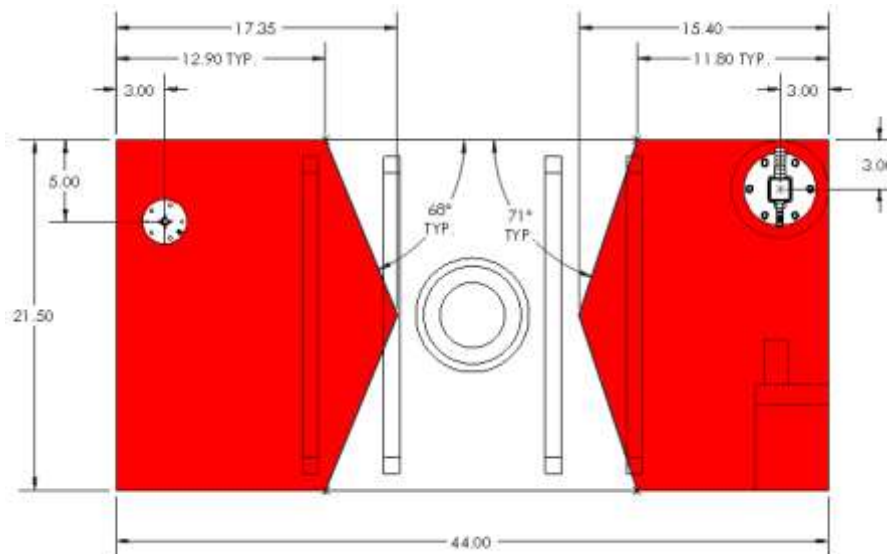


**@ Static Tip**  
**51.9 gallons (88.8%)**

**@ 4° Bow Up**  
 55.5 gallons (94.9%)

**@ 4° Bow Down**  
 46.9 gallons (80.2%)

**Component Placement & Selection**



■ Each highlighted area must contain the centerline of at least 1 vent.

Component	Qty	Part Number	Supplier	Special Instructions
Fluid Level Valve	1	SPAFLV002-00X	Moeller	On 0.25" boss.
Vent Valve	1	SPAGRV001-00X	Moeller	