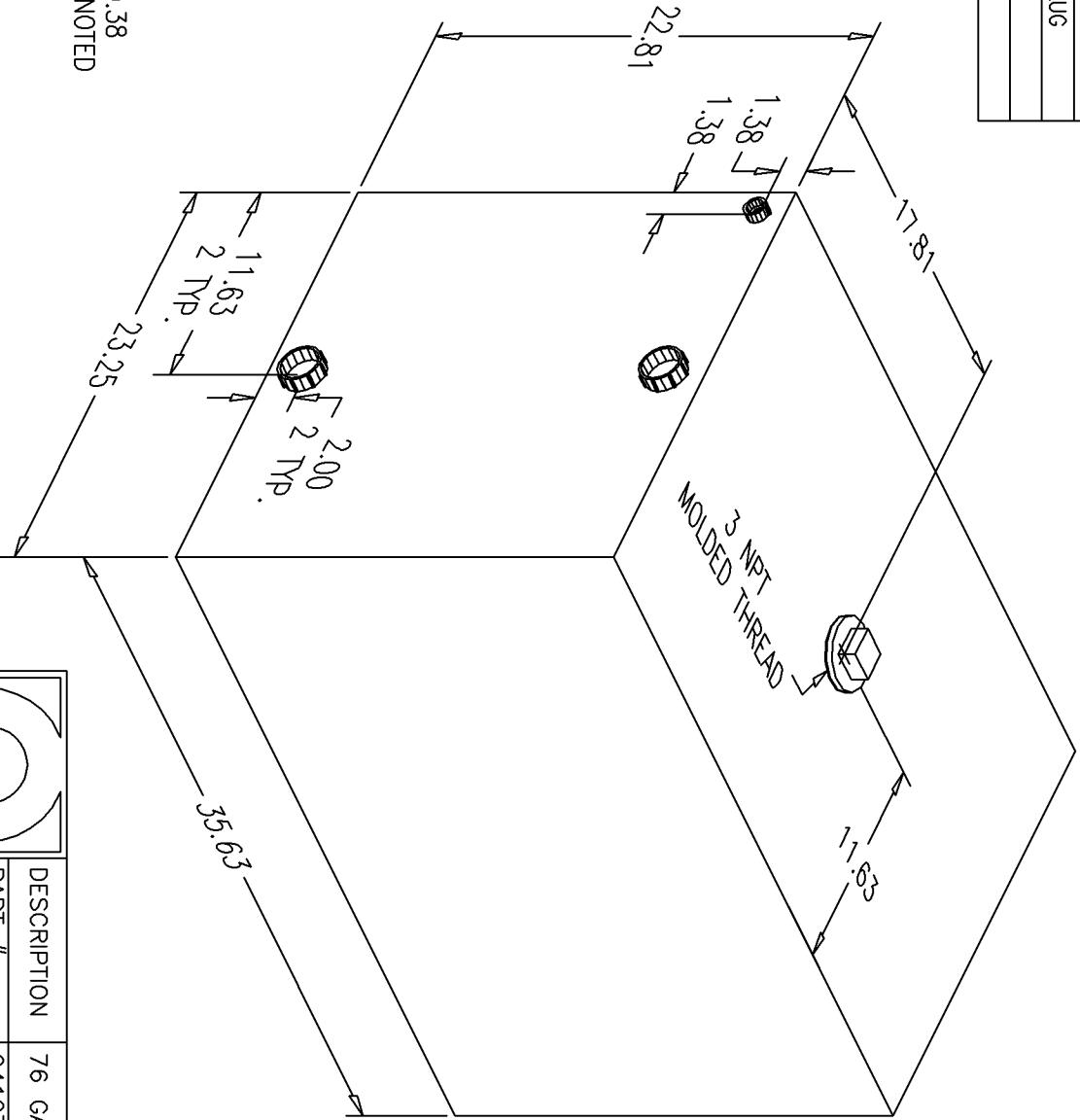


# BILL of MATERIALS

Qty.	DESCRIPTION
1	0.50" SPIN FITTING
2	1.50" SPIN FITTINGS
1	3" NPT MOLDED THREAD W/ PLUG
1	AFTERMARKET CARTON (207701)
	OVERALL HEIGHT 22.81"

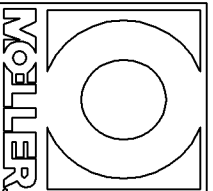
NO.	REVISION	DATE
1	MOVED SPIN FITTING	7/6/95
2	CHANGE WALL THICKNESS TO .300	3/22/02
3	REPLACE 3 NPT FITTING W/ 3 NPT MOLDED THREAD.	2/9/06



NOTE: ALL EDGES HAVE R0.38  
UNLESS OTHERWISE NOTED

PAGE 1 OF 1

THIS DRAWING AND THE ATTACHED DRAWINGS (AND THE DATA SHOWN THEREON) IS CONFIDENTIAL AND PROPRIETARY AND SHALL NOT BE USED, DISCLOSED TO OTHERS, REPRODUCED FOR ANY PURPOSE EXCEPT FOR QUOTATION TO OR ORDER BY MOELLER MARINE PRODUCTS, INC. AND/OR ITS SUBSIDIARIES WITHOUT THEIR WRITTEN CONSENT TO THE USE OF SUCH DRAWINGS AND/OR DATA.



DESCRIPTION	76 GALLON WASTE TANK W/ BOX	
PART #	041277	COLOR   NATURAL
MATERIAL	LINEAR POLYETHYLENE	
TOLERANCES	±1.5% UNLESS OTHERWISE NOTED	
WALL THK.	0.300"	DATE   2/9/06
DRAWN BY	MOELLER ENGINEERING	

