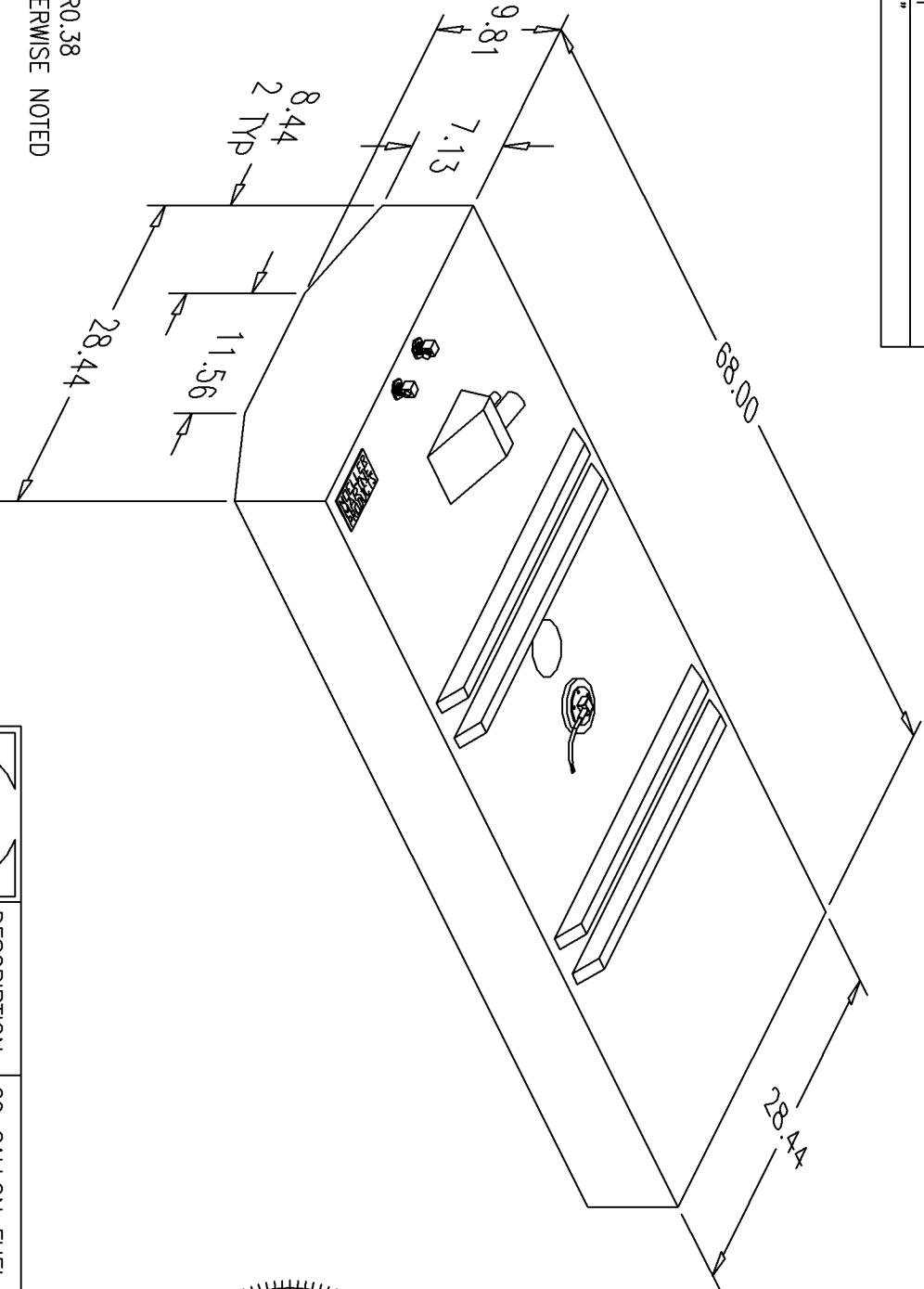


BILL of MATERIALS	
Qty.	DESCRIPTION
1	9.50" SS WEMA SENDER W/ DELPHI CONNECTORS & LABEL
1	SS PICKUP W/O BARB
1	SS RETURN W/ 1/4 NPT PLUG
	MOLDED FILL AND VENT
	OVERALL HEIGHT 12.50"

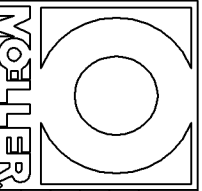
NO.	REVISION	DATE
1	REPLACE WEMA WITH SS WEMA	11/22/02
2	CHANGED PICKUP & RETURN TO SS, REMOVE BARB.	8/19/03
3	ADD DELPHI CONNECTORS & D1 LABEL	5/10/04



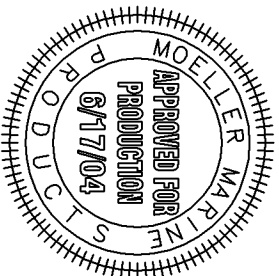
NOTE: ALL EDGES R0.38
UNLESS OTHERWISE NOTED

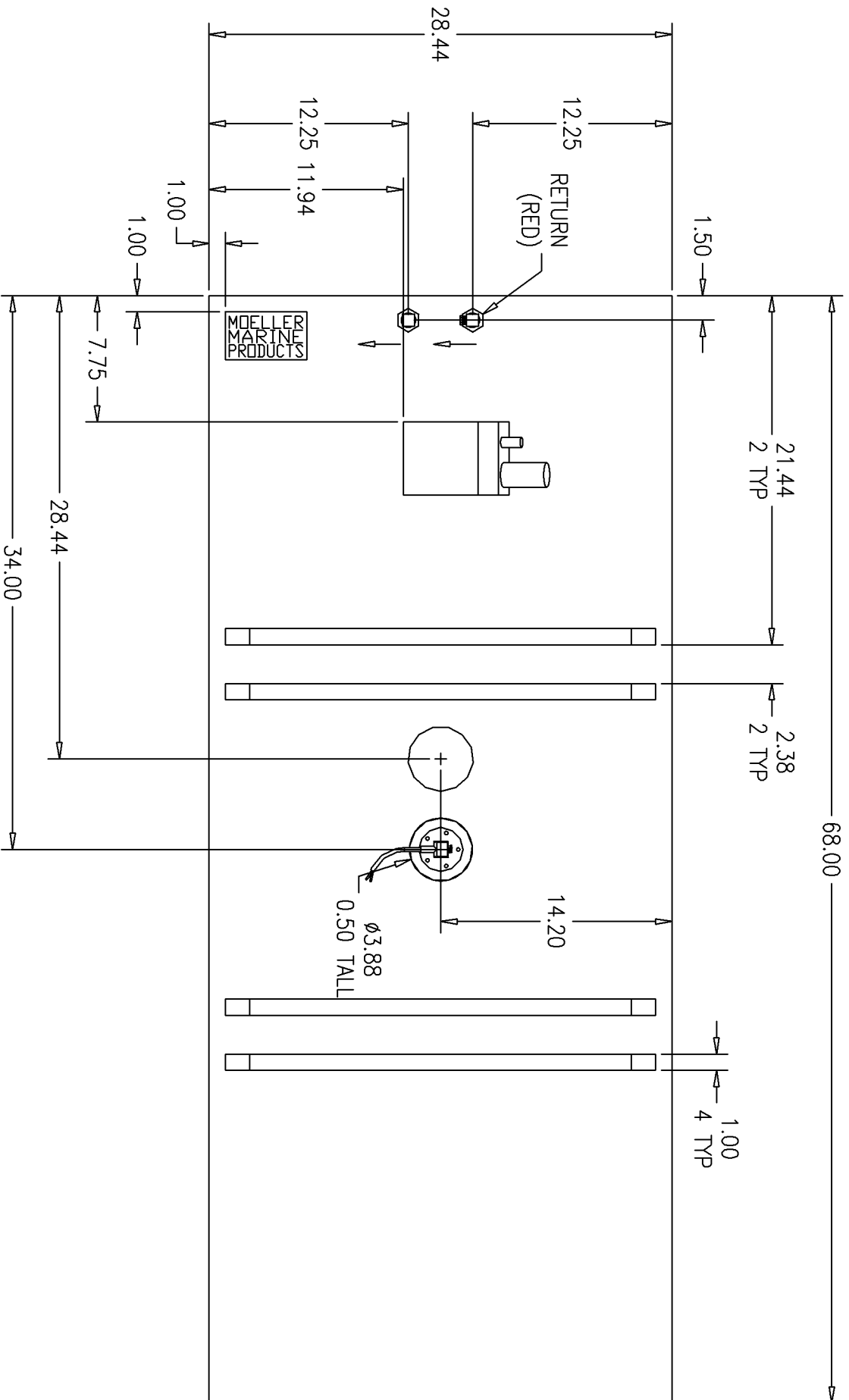
PAGE 1 OF 3

THIS DRAWING AND THE ATTACHED DRAWINGS (AND THE DATA SHOWN THEREON) IS CONFIDENTIAL AND PROPRIETARY AND SHALL NOT BE USED, DISCLOSED TO OTHERS, REPRODUCED FOR ANY PURPOSE EXCEPT FOR QUOTATION TO OR ORDER BY MOELLER MARINE PRODUCTS, INC. AND/OR ITS SUBSIDIARIES WITHOUT THEIR WRITTEN CONSENT TO THE USE OF SUCH DRAWINGS AND/OR DATA.

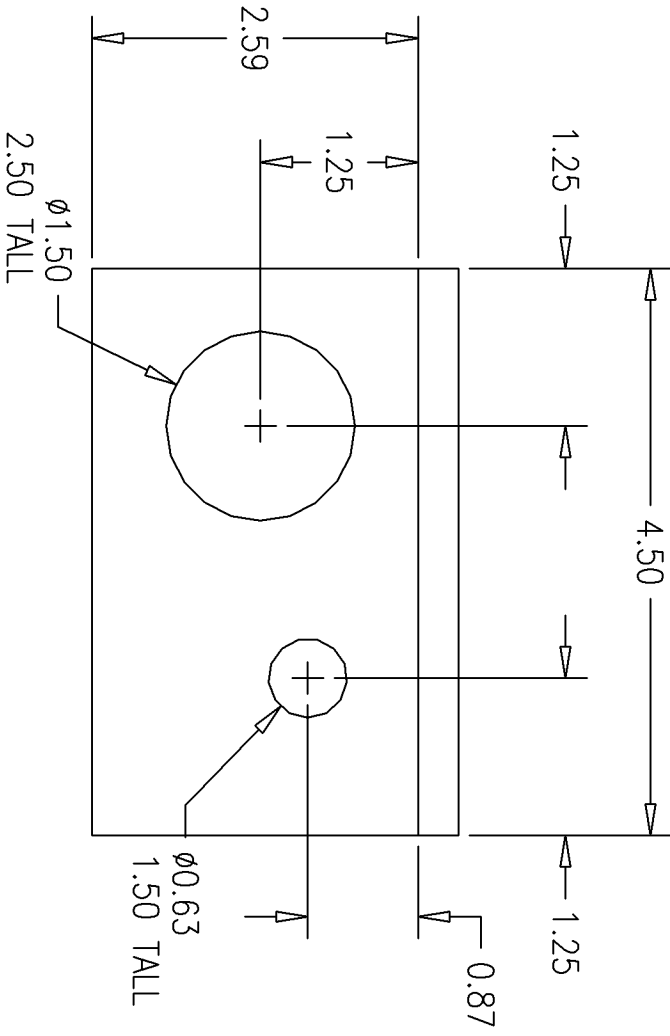


DESCRIPTION	69 GALLON FUEL TANK
PART #	FT6902-2
MATERIAL	CROSSLINK POLYETHYLENE
TOLERANCES	±1.5% UNLESS OTHERWISE NOTED
WALL THK.	0.235" NOMINAL
DRAWN BY	MOELLER ENGINEERING





NOTE: RIBS ARE 1.50 TALL, 1.00 WIDE, 1.00 FROM ENDS OF TANK, AND BEVELED 45°.
CONE IS Ø4.00 ON TOP AND Ø5.00 ON BOTTOM.



NOTE: DOGHOUSE IS 6.50 LONG, 4.50 WIDE, 2.50 TALL, & HAS A 1.25 TOP FLAT.
 FACE OF DOGHOUSE IS ANGLED 15° FROM VERTICAL.
 VIEW IS ALIGNED WITH FACE OF DOGHOUSE.

AUXILIARY VIEW
 5/10/04