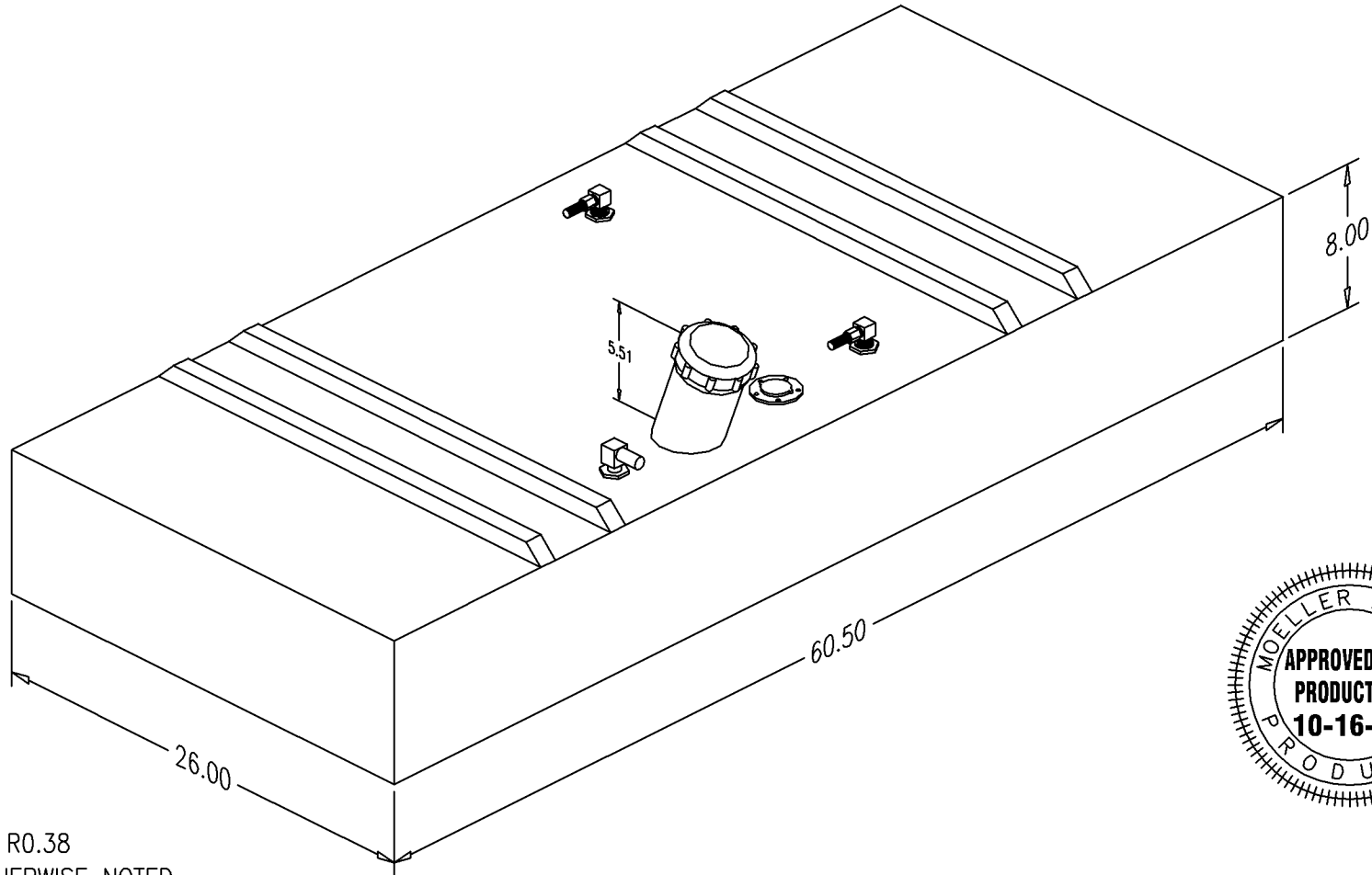


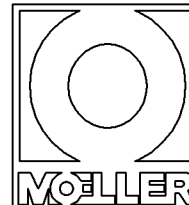
| NO. | REVISION | DATE |
|-----|--|----------|
| 1 | REPLACE STEWART WARNER SENDER W/ 7.00" WEMA. | 2/22/01 |
| 2 | REPLACE WEMA WITH SS WEMA | 10/3/02 |
| 3 | REMOVE DOGHOUSE & LABEL, ADD VENT, RETURN, DRAIN & 3.50 KELCH NECK W/ CAP, REPLACE WEMA W/ MECHANICAL SENDER W/ DIRECT SITE GUAGE, MOVE FITTINGS AND CHANGE COLOR TO BLACK | 10/22/09 |



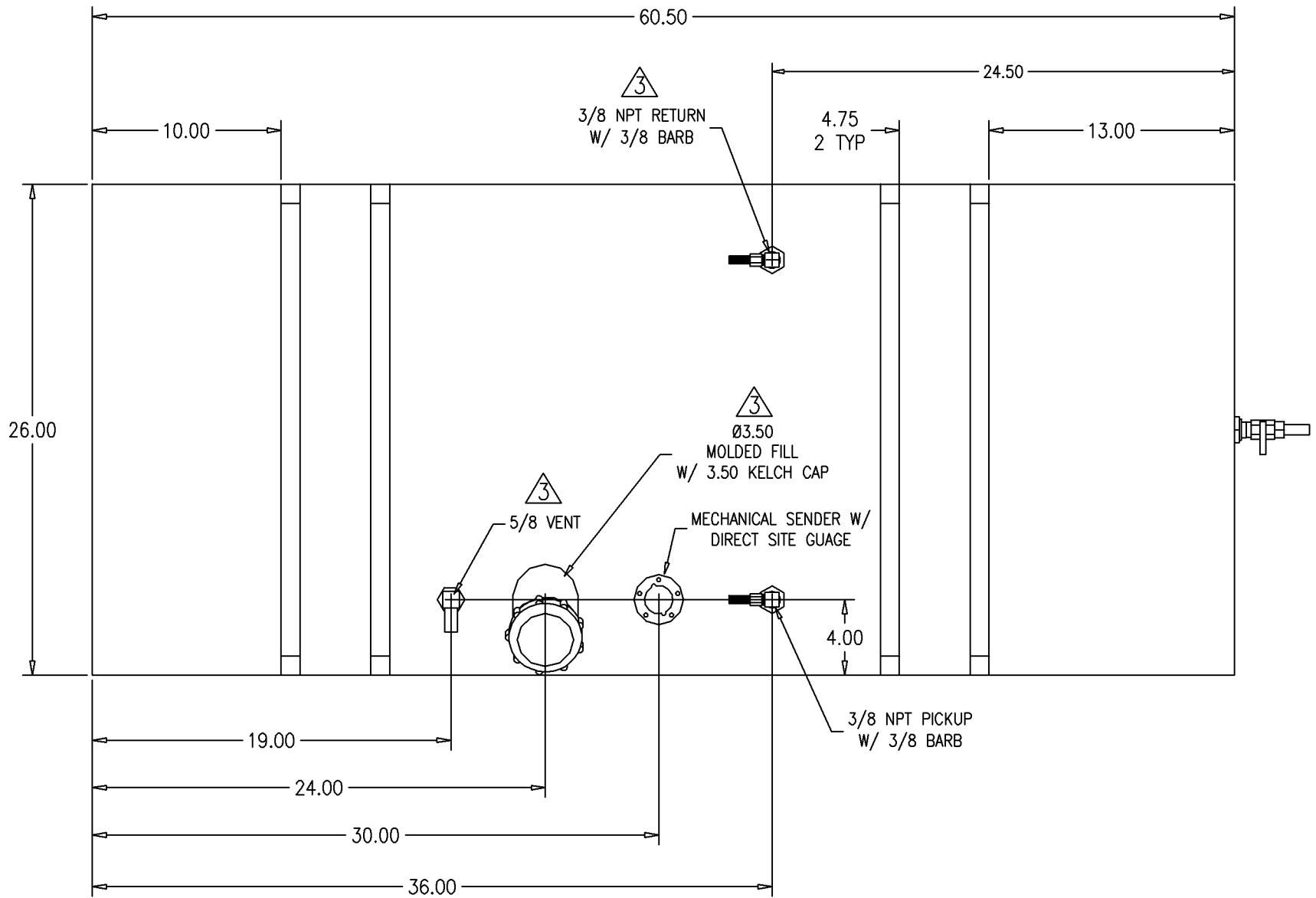
NOTE: ALL EDGES R0.38
UNLESS OTHERWISE NOTED.

PAGE 1 OF 3

THIS DRAWING AND THE ATTACHED DRAWINGS (AND THE DATA SHOWN THEREON) IS CONFIDENTIAL AND PROPRIETARY AND SHALL NOT BE USED, DISCLOSED TO OTHERS, REPRODUCED FOR ANY PURPOSE EXCEPT FOR QUOTATION TO OR ORDER BY MOELLER MARINE PRODUCTS, INC. AND/OR IT'S SUBSIDIARIES WITHOUT THEIR WRITTEN CONSENT TO THE USE OF SUCH DRAWINGS AND/OR DATA.



| | | | |
|-------------|------------------------------|-------|----------|
| DESCRIPTION | 50 GALLON FUEL TANK | | |
| PART # | FT5017 | COLOR | BLACK |
| MATERIAL | CROSSLINK POLYETHYLENE | | |
| TOLERANCES | ±1.5% UNLESS OTHERWISE NOTED | | |
| WALL THK. | 0.220" | DATE | 10/22/09 |
| DRAWN BY | MOELLER ENGINEERING | | |



NOTE: RIBS ARE 1.00 WIDE, 1.00 TALL, AND BEVELED 45° AT ENDS.

