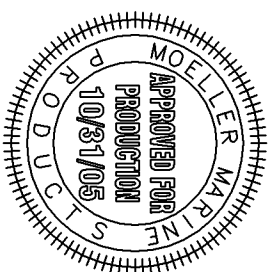
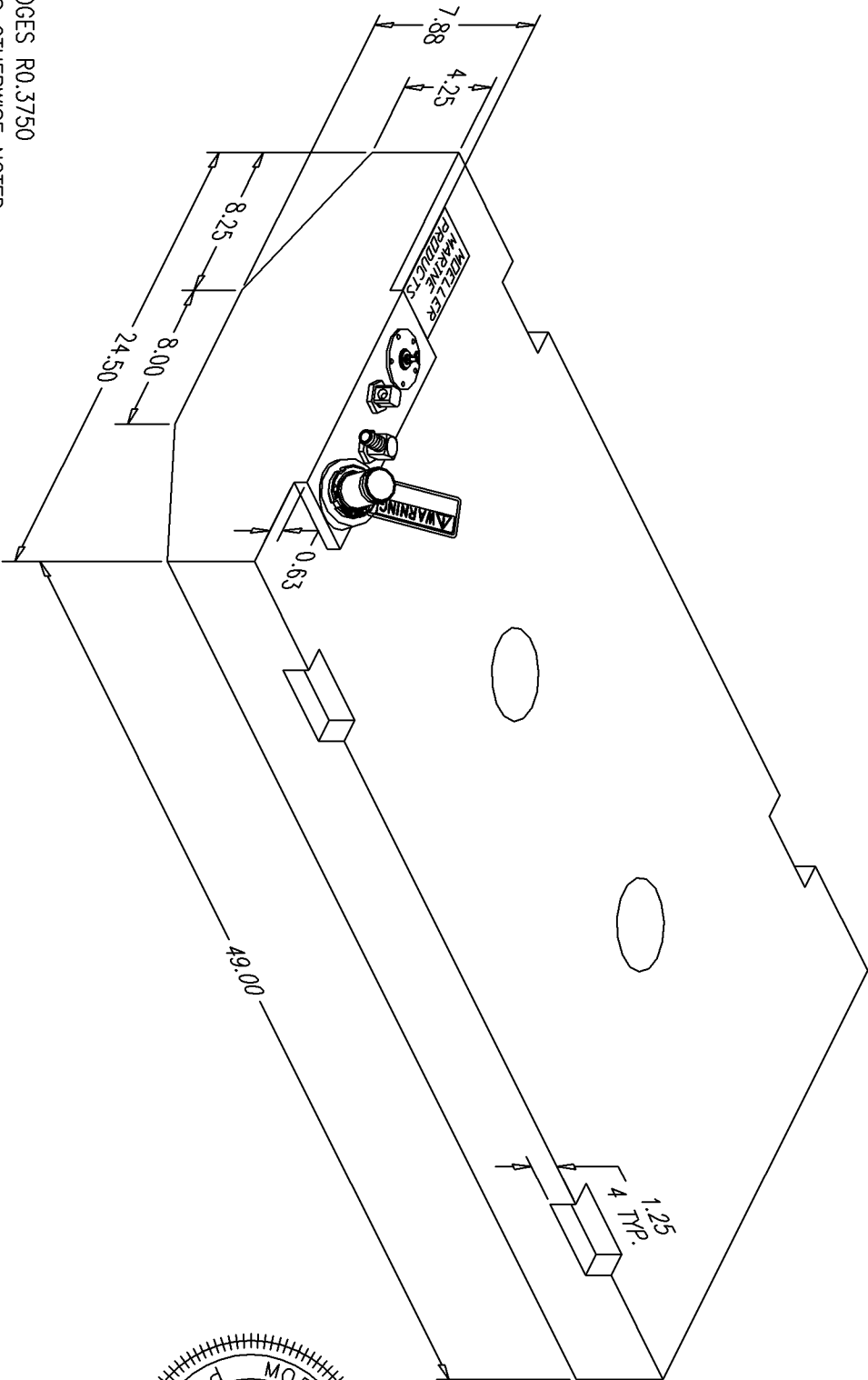


BILL of MATERIALS

Qty.	DESCRIPTION
1	PRIME SENDING UNIT 6.90"
1	ALUM. PL3 PICKUP W/O BARB
1	ALUM. PL3 VENT W/ 5/8" BARB
1	Ø1.50" ALUM. FILL W/ GROUND TAG
	OVERALL HEIGHT 11.23"

NO.	REVISION	DATE
1	ADD WARNING TAG TO FILL.	10/31/05

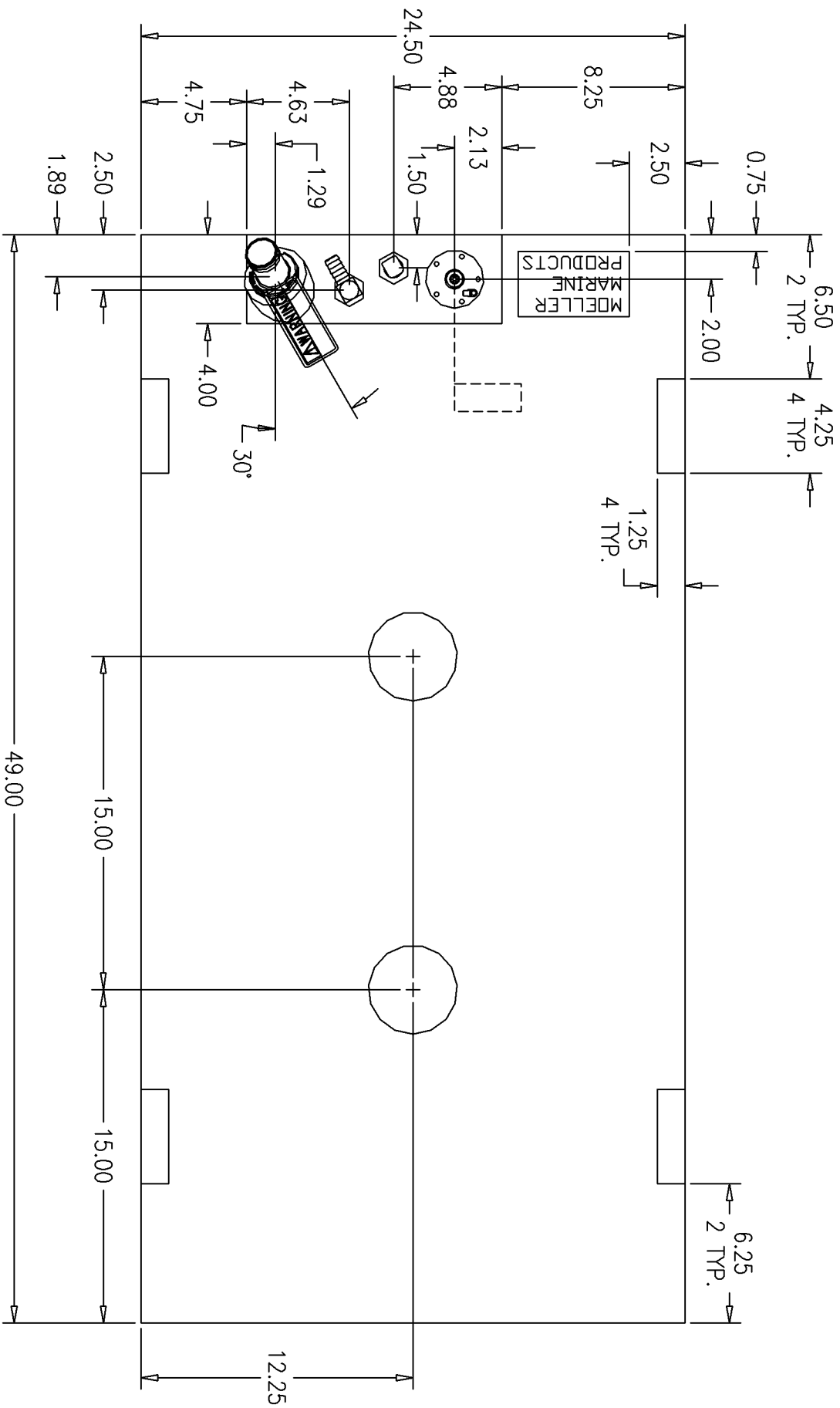


NOTE: ALL EDGES R0.3750
UNLESS OTHERWISE NOTED

PAGE 1 OF 3

THIS DRAWING AND THE ATTACHED DRAWINGS (AND THE DATA SHOWN THEREON) IS CONFIDENTIAL AND PROPRIETARY AND SHALL NOT BE USED, DISCLOSED TO OTHERS, REPRODUCED FOR ANY PURPOSE EXCEPT FOR QUOTATION TO OR ORDER BY MOELLER MARINE PRODUCTS, INC. AND/OR ITS SUBSIDIARIES WITHOUT THEIR WRITTEN CONSENT TO THE USE OF SUCH DRAWINGS AND/OR DATA.

DESCRIPTION	28 GALLON FUEL TANK (032528)
PART #	FT2899
MATERIAL	CROSSLINK POLYETHYLENE
TOLERANCES	±1.5% UNLESS OTHERWISE NOTED
WALL THK.	0.200" NOMINAL
DRAWN BY	MOELLER ENGINEERING



NOTE: CONES ARE $\phi 4.00$ AT TOP AND $\phi 5.00$ AT BOTTOM.
 FILL IS ANGLED 30° FROM VERTICAL, BOSS $\phi 2.91$.

