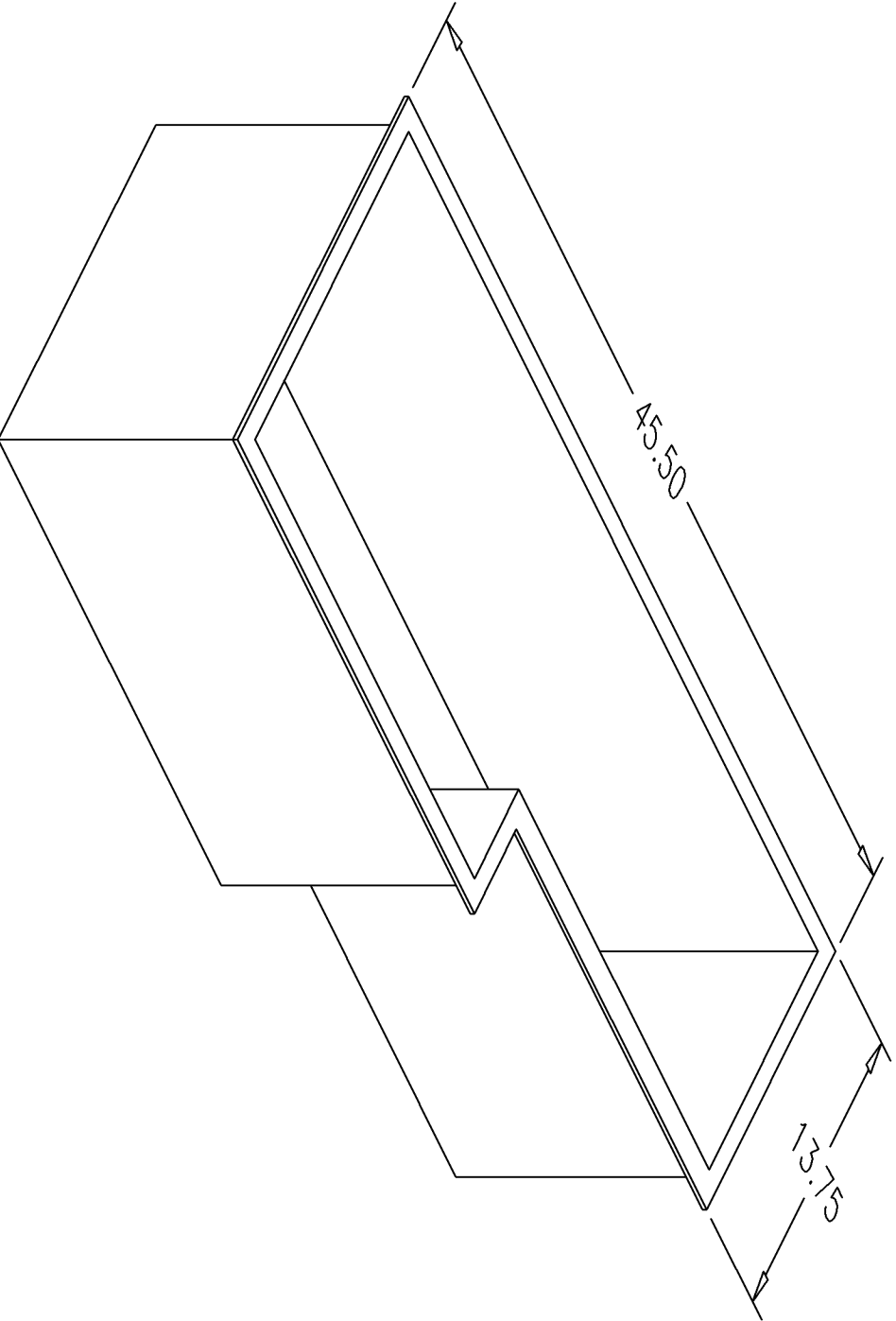


BILL of MATERIALS

| Qty. | DESCRIPTION |
|------|-----------------------|
| | OVERALL HEIGHT 12.75" |

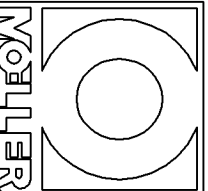
| NO. | REVISION | DATE |
|-----|------------------------------------|---------|
| 1 | DRILL OUT DRAIN 1" I.D. | 2/2/94 |
| 2 | MOVE DRAIN LOCATION | 4/23/97 |
| 3 | CHANGE COLOR FROM GRAY TO NATURAL. | 3/7/01 |



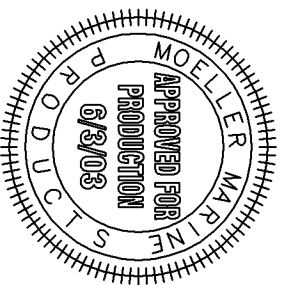
NOTE: ALL EDGES R0.3750
UNLESS OTHERWISE NOTED

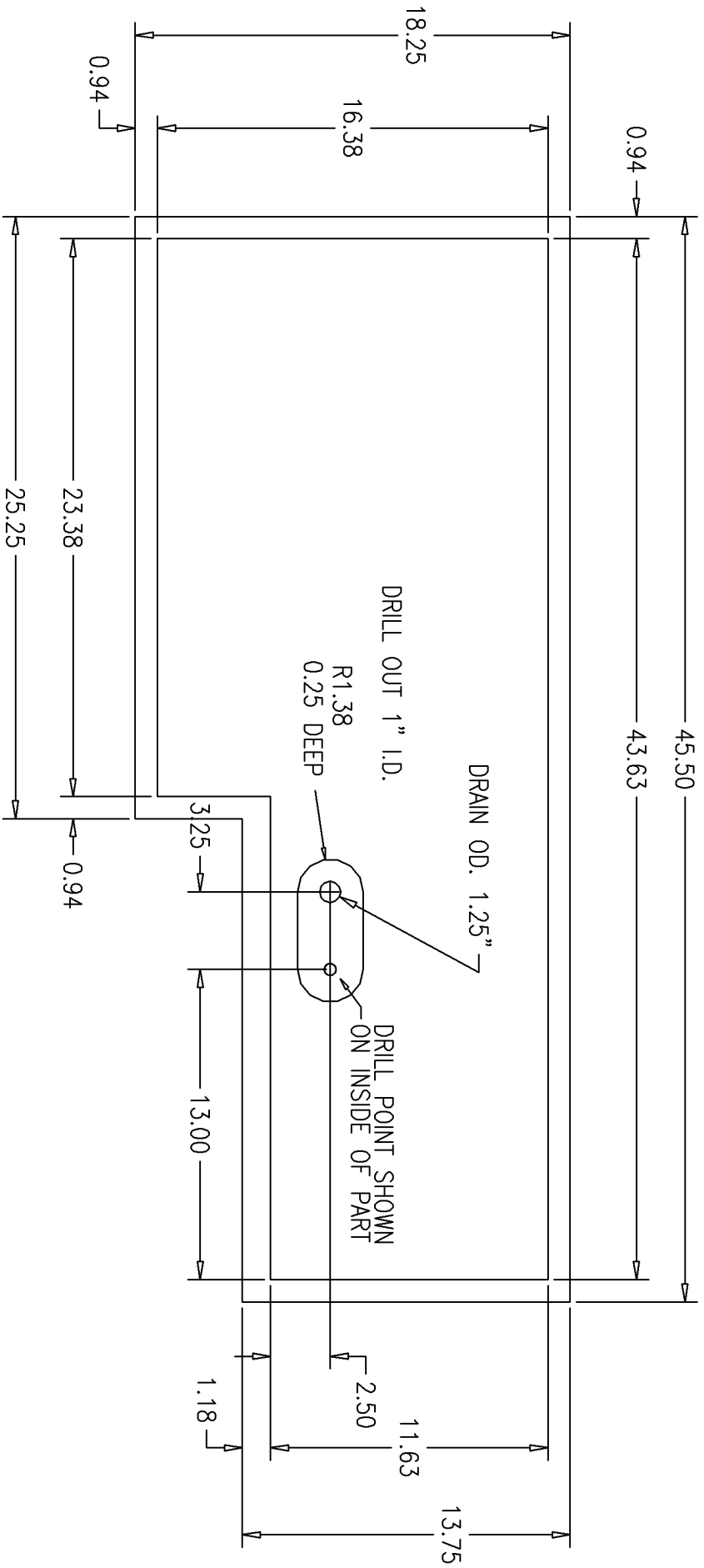
PAGE 1 OF 4

THIS DRAWING AND THE ATTACHED DRAWINGS (AND THE DATA SHOWN THEREON) IS CONFIDENTIAL AND PROPRIETARY AND SHALL NOT BE USED, DISCLOSED TO OTHERS, REPRODUCED FOR ANY PURPOSE EXCEPT FOR QUOTATION TO OR ORDER BY MOELLER MARINE PRODUCTS, INC. AND/OR ITS SUBSIDIARIES WITHOUT THEIR WRITTEN CONSENT TO THE USE OF SUCH DRAWINGS AND/OR DATA.



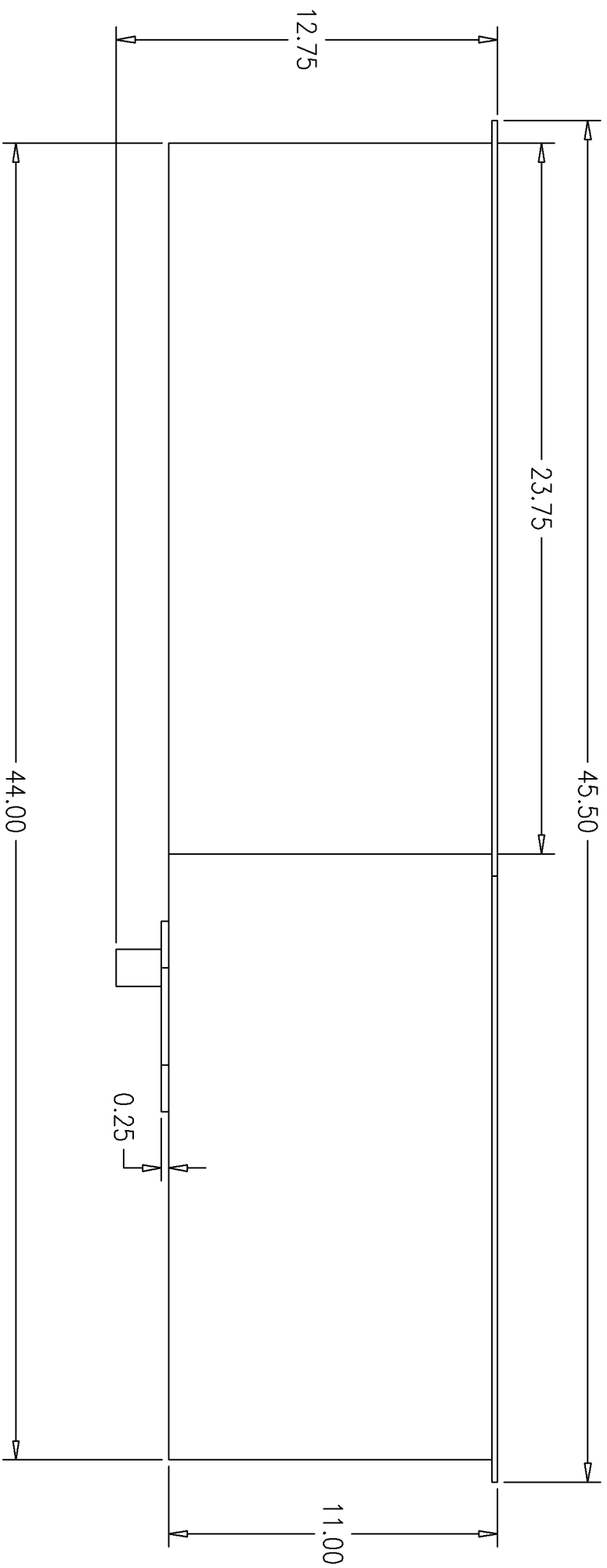
| | | |
|-------------|------------------------------|---------------|
| DESCRIPTION | 28 GALLON LIVEWELL | |
| PART # | LW-226 | COLOR NATURAL |
| MATERIAL | LINEAR POLYETHYLENE | |
| TOLERANCES | ±1.5% UNLESS OTHERWISE NOTED | |
| WALL THK. | 0.185" | DATE 3/7/01 |
| DRAWN BY | MOELLER ENGINEERING | |





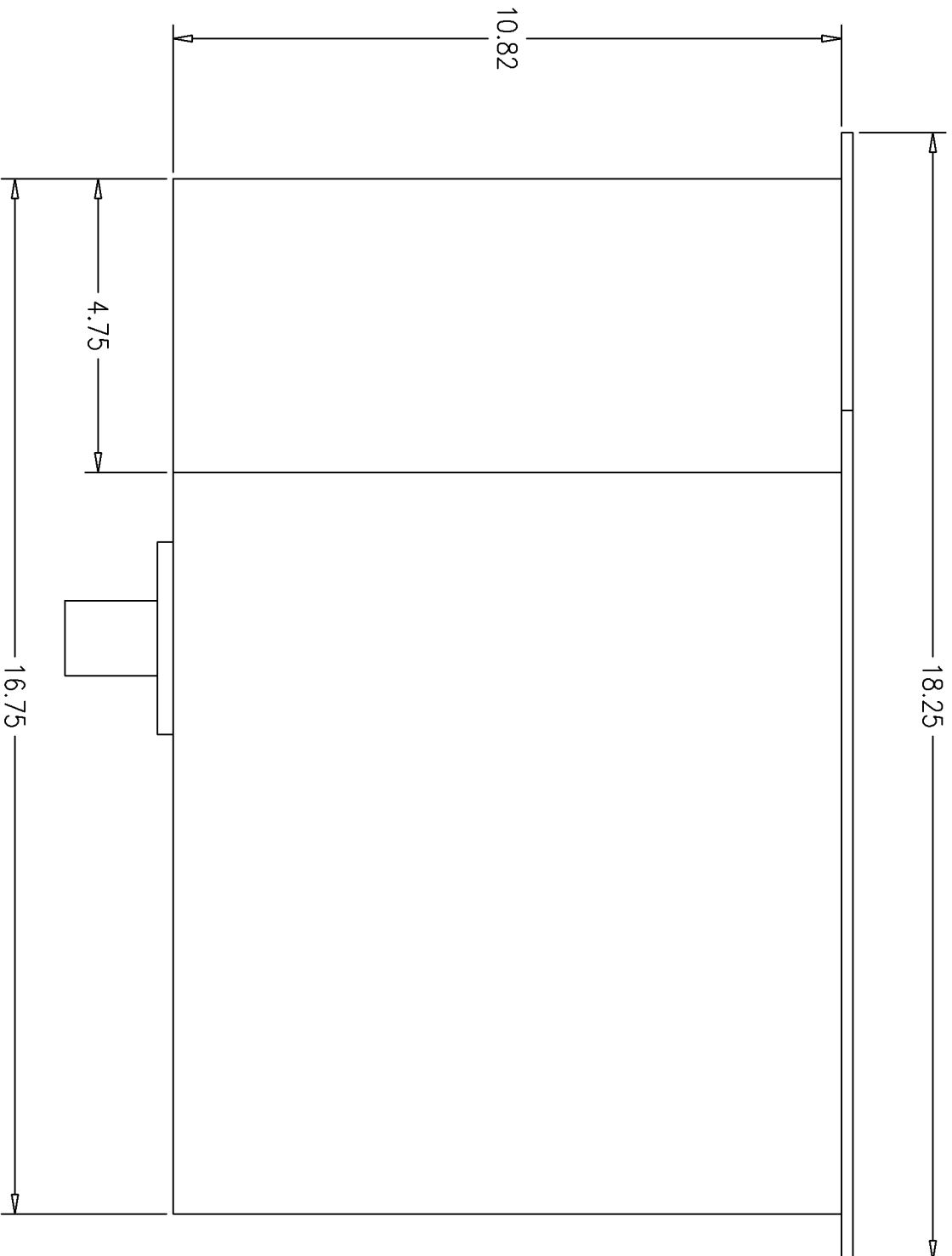
TOP VIEW
 3/7/01

PAGE 2
 LW-226-R3



FRONT VIEW
3/7/01

PAGE 3
LW-226-R3



RIGHT SIDE VIEW
3/7/01