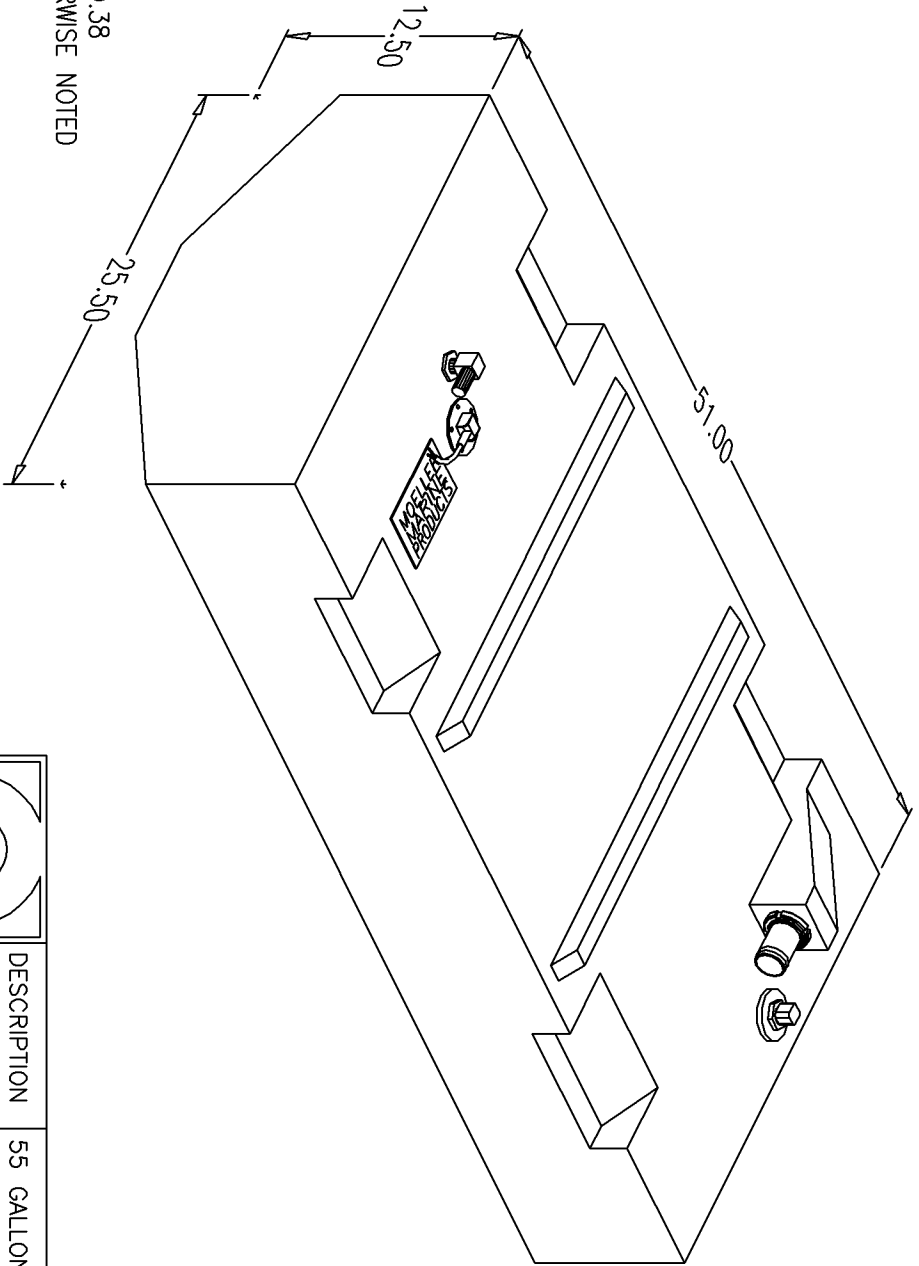


BILL of MATERIALS

Qty.	DESCRIPTION
1	11.50" SS WEMA SENDER
1	ALUM. PL3 PICKUP W/O BARB
1	VENT W/ 5/8" BARB
1	Ø1.50" ALUMINUM FILL W/ GROUND TAG
	OVERALL HEIGHT 15.50"

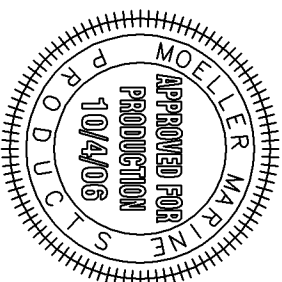
NO.	REVISION	DATE

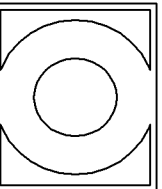


NOTE: ALL EDGES R0.38
UNLESS OTHERWISE NOTED

PAGE 1 OF 4

THIS DRAWING AND THE ATTACHED DRAWINGS (AND THE DATA SHOWN THEREON) IS CONFIDENTIAL AND PROPRIETARY AND SHALL NOT BE USED, DISCLOSED TO OTHERS, REPRODUCED FOR ANY PURPOSE EXCEPT FOR QUOTATION TO OR ORDER BY MOELLER MARINE PRODUCTS, INC. AND/OR ITS SUBSIDIARIES WITHOUT THEIR WRITTEN CONSENT TO THE USE OF SUCH DRAWINGS AND/OR DATA.



		DESCRIPTION	55 GALLON FUEL TANK (032555-1)
		PART #	FT5599-1
MATERIAL		CROSSLINK POLYETHYLENE	COLOR NATURAL
TOLERANCES		±1.5% UNLESS OTHERWISE NOTED	
WALL THK.		0.235" NOMINAL	DATE 10/4/06
DRAWN BY		MOELLER ENGINEERING	