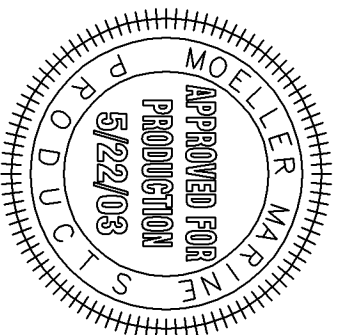
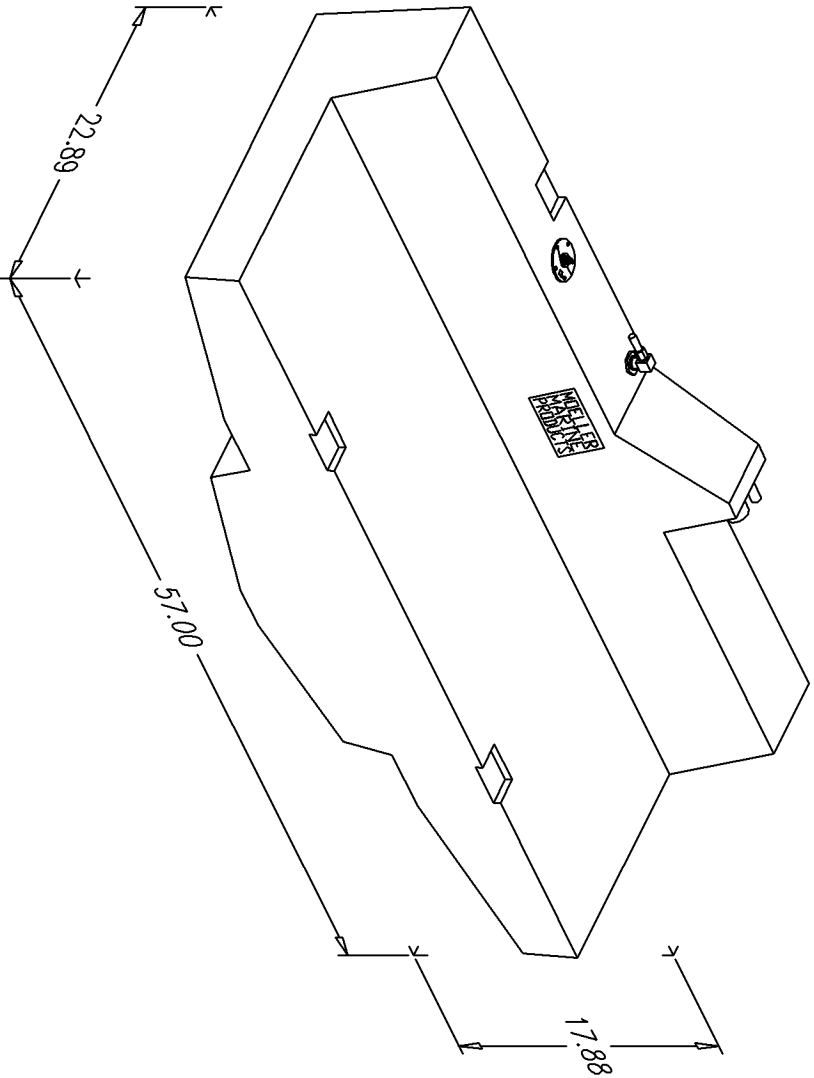


BILL of MATERIALS

Qty.	DESCRIPTION
1	STEWART WARNER SENDER CALIBRATED
1	PICKUP w/ 3/8 BARB
	MOLDED FILL AND VENT
	OVERALL HEIGHT 22.38"

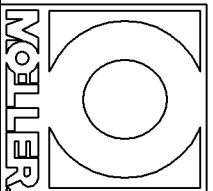
NO.	REVISION	DATE
1	SHORTEN HEIGHT OF DOGHOUSE BY 1/2".	9/8/00



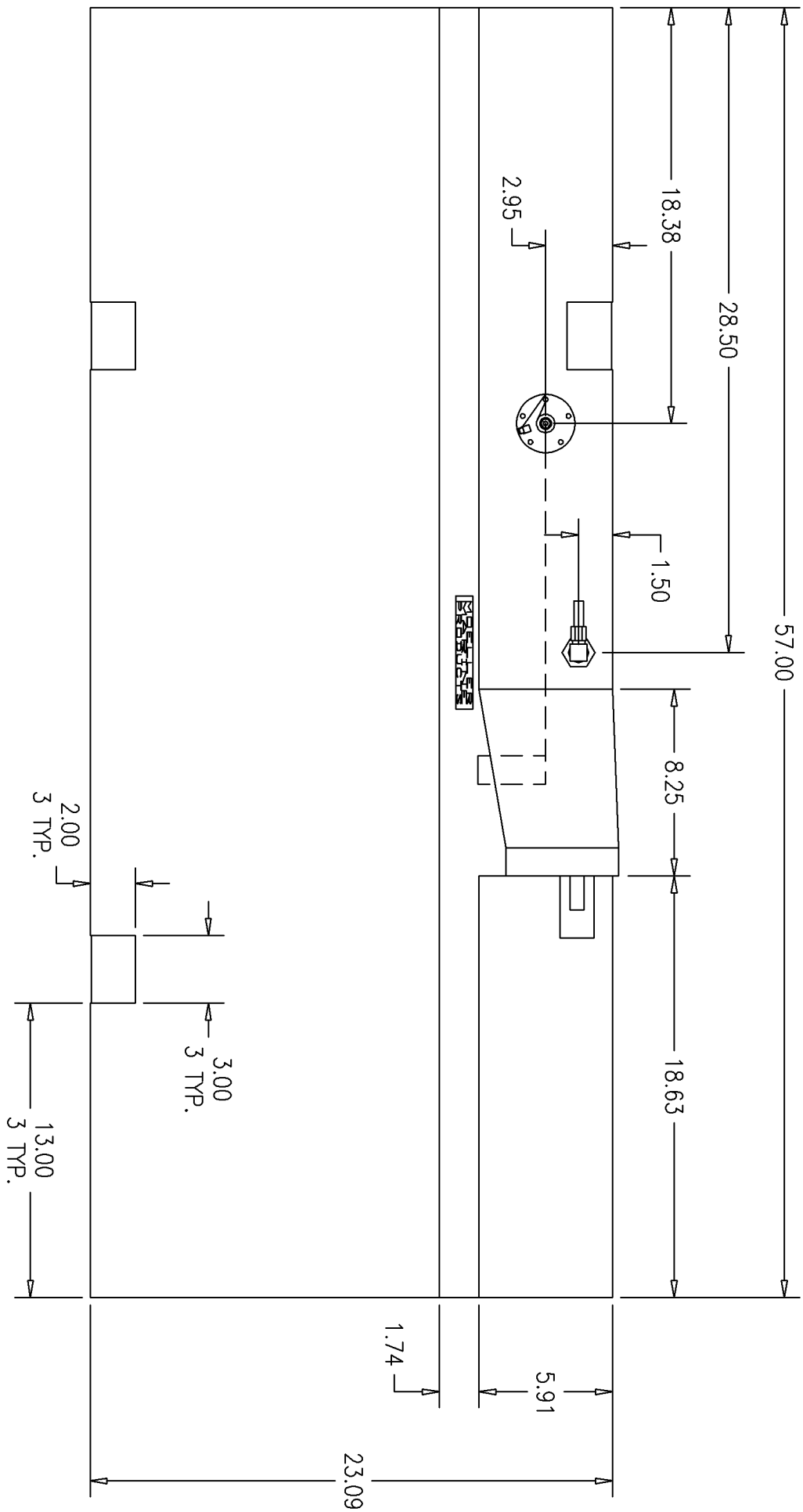
NOTE: ALL EDGES R0.38
UNLESS OTHERWISE NOTED

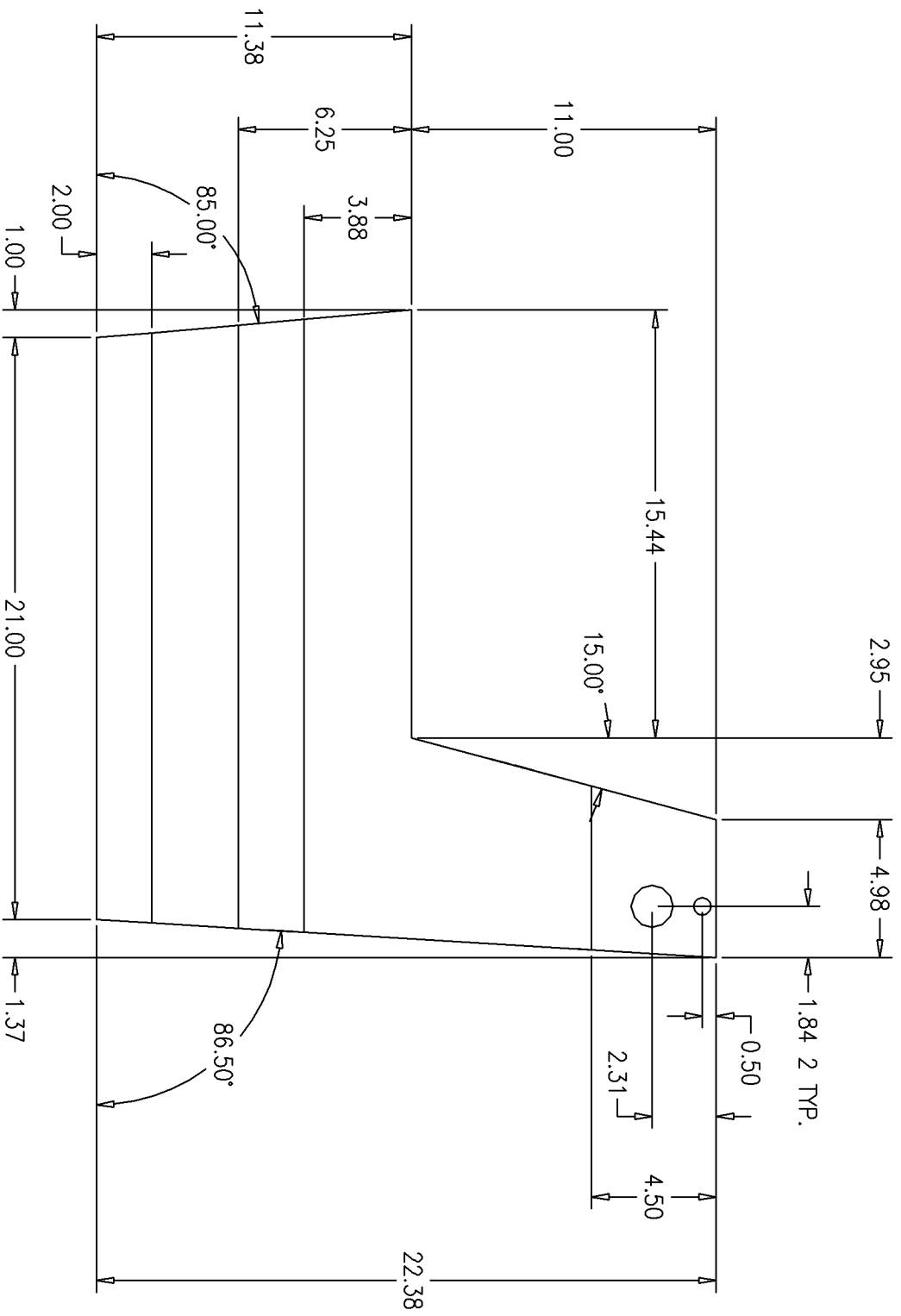
PAGE 1 OF 4

THIS DRAWING AND THE ATTACHED DRAWINGS (AND THE DATA SHOWN THEREON) IS CONFIDENTIAL AND PROPRIETARY AND SHALL NOT BE USED, DISCLOSED TO OTHERS, REPRODUCED FOR ANY PURPOSE EXCEPT FOR QUOTATION TO OR ORDER BY MOELLER MARINE PRODUCTS, INC. AND/OR ITS SUBSIDIARIES WITHOUT THEIR WRITTEN CONSENT TO THE USE OF SUCH DRAWINGS AND/OR DATA.

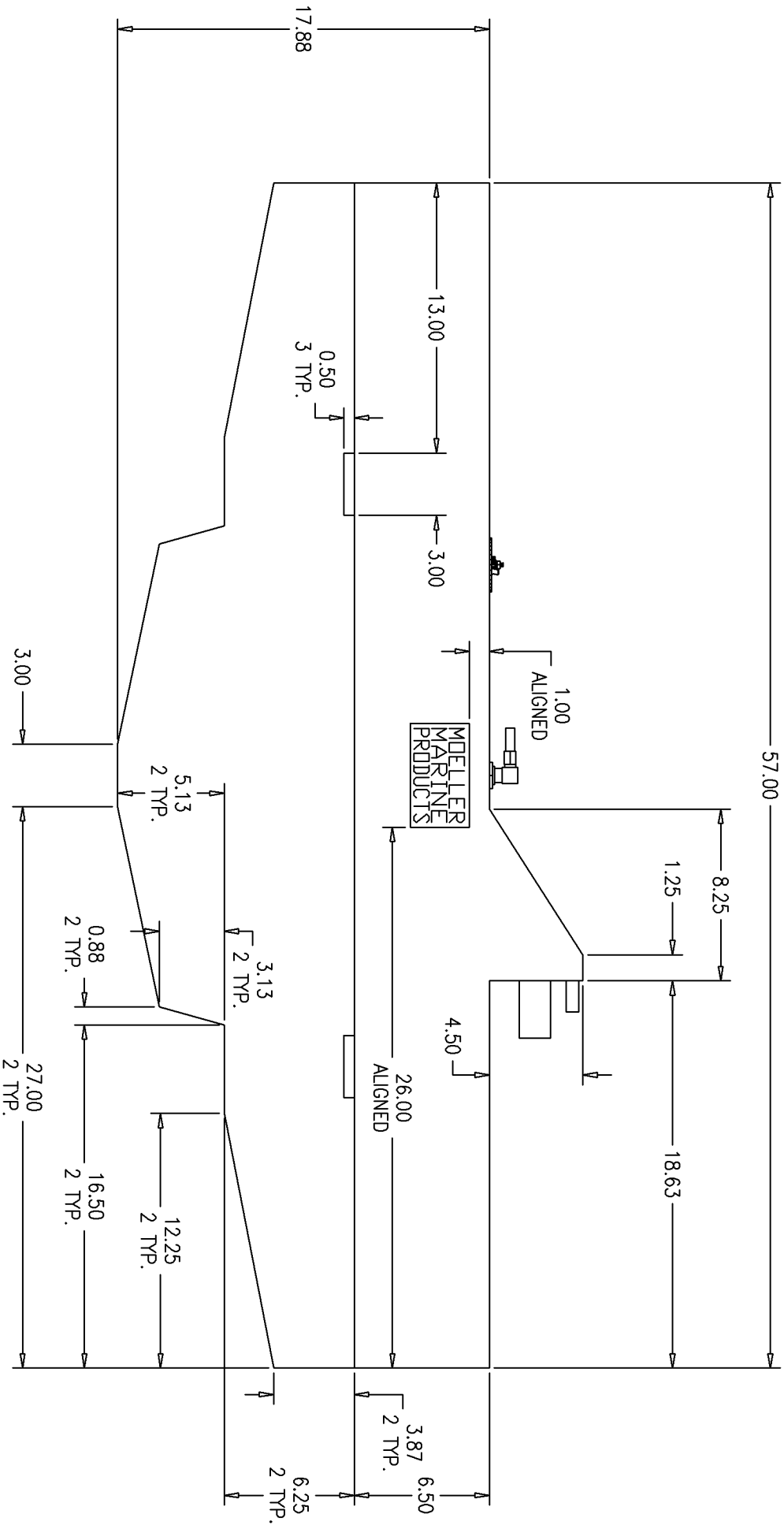


DESCRIPTION	47 GALLON FUEL TANK
PART #	FT4713
MATERIAL	CROSSLINK POLYETHYLENE
TOLERANCES	±1.5% UNLESS OTHERWISE NOTED
WALL THK.	0.220 NOMINAL
DRAWN BY	MOELLER ENGINEERING
COLOR	NATURAL
DATE	9/20/00





NOTE: FILL IS $\phi 1.50$ AND 2.75 LONG
 VENT IS $\phi 0.63$ AND 1.50 LONG



NOTE: LABEL IS 1.00 FROM TOP EDGE AND CENTERED ON PLANE.