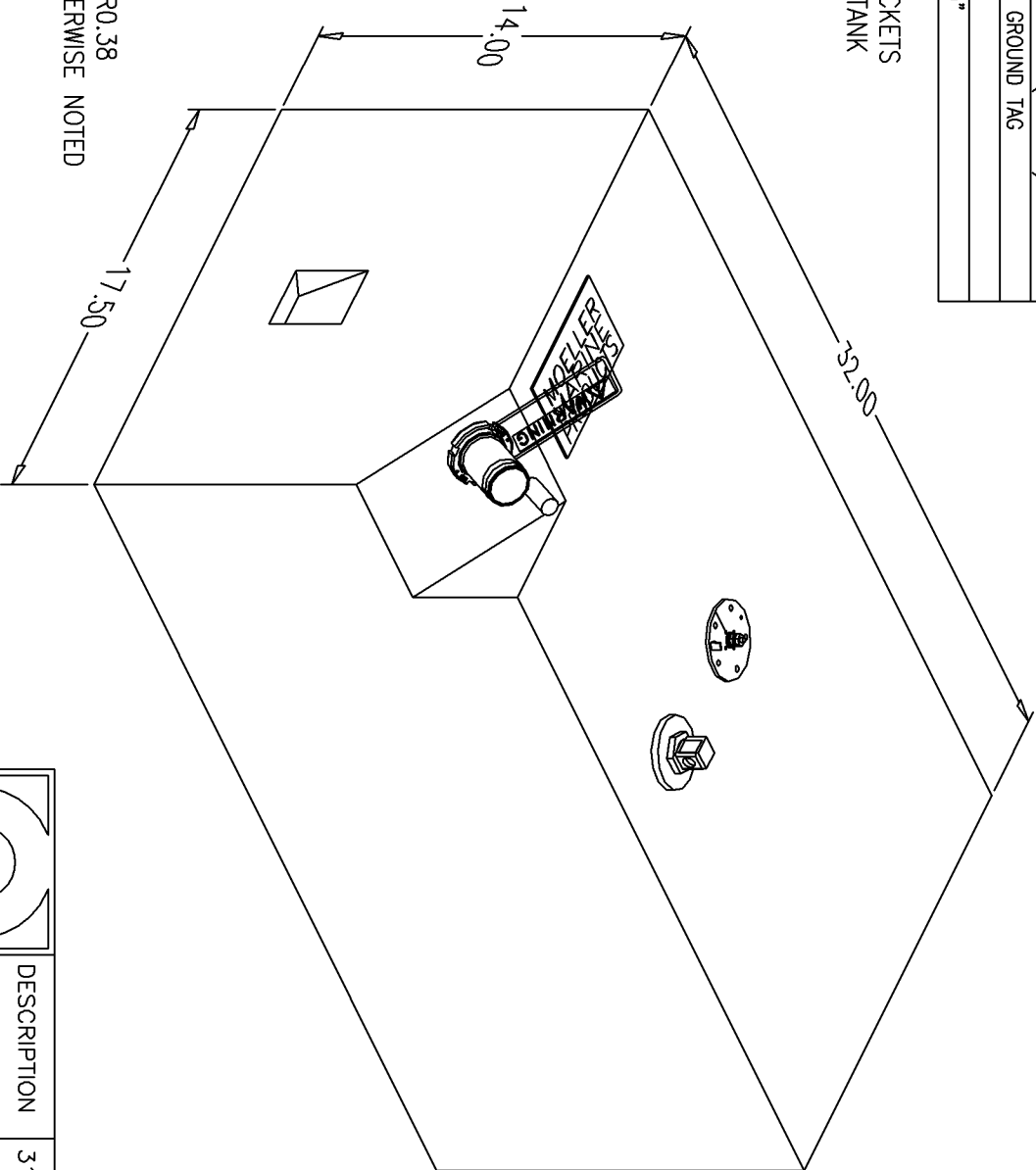


BILL of MATERIALS

Qty.	DESCRIPTION
1	ROCHESTER SENDING UNIT, DBL PLATED
1	ALUM. PL3 PICKUP W/O BARB
2	HOOK POCKETS W/ BRACKETS (ZIP TIED)
1	Ø1.50" ALUM. FILL W/ GROUND TAG
1	MOLDED VENT
	OVERALL HEIGHT 15.09"

NOTE: ATTACH BRACKETS
TO TOP OF TANK



NOTE: ALL EDGES R0.38
UNLESS OTHERWISE NOTED

PAGE 1 OF 3

THIS DRAWING AND THE ATTACHED DRAWINGS (AND THE DATA SHOWN THEREON) IS CONFIDENTIAL AND PROPRIETARY AND SHALL NOT BE USED, DISCLOSED TO OTHERS, REPRODUCED FOR ANY PURPOSE EXCEPT FOR QUOTATION TO OR ORDER BY MOELLER MARINE PRODUCTS, INC. AND/OR ITS SUBSIDIARIES WITHOUT THEIR WRITTEN CONSENT TO THE USE OF SUCH DRAWINGS AND/OR DATA.

NO.	REVISION	DATE
1	REPLACED MOLDED FILL W/ ALUMINUM & REPLACED PICKUP W/ PL3 SERIES PICKUP	5/6/05
2	ADD Ø2.50" BOSS, GROUND TAG, & ZIP TIE	9/21/05

		DESCRIPTION	31 GALLON FUEL TANK (032631)
		PART #	FT3199
MATERIAL		CROSSLINK POLYETHYLENE	COLOR NATURAL
TOLERANCES		±1.5% UNLESS OTHERWISE NOTED	
WALL THK.		0.200" NOMINAL	
DRAWN BY		MOELLER ENGINEERING	DATE 11/18/05

