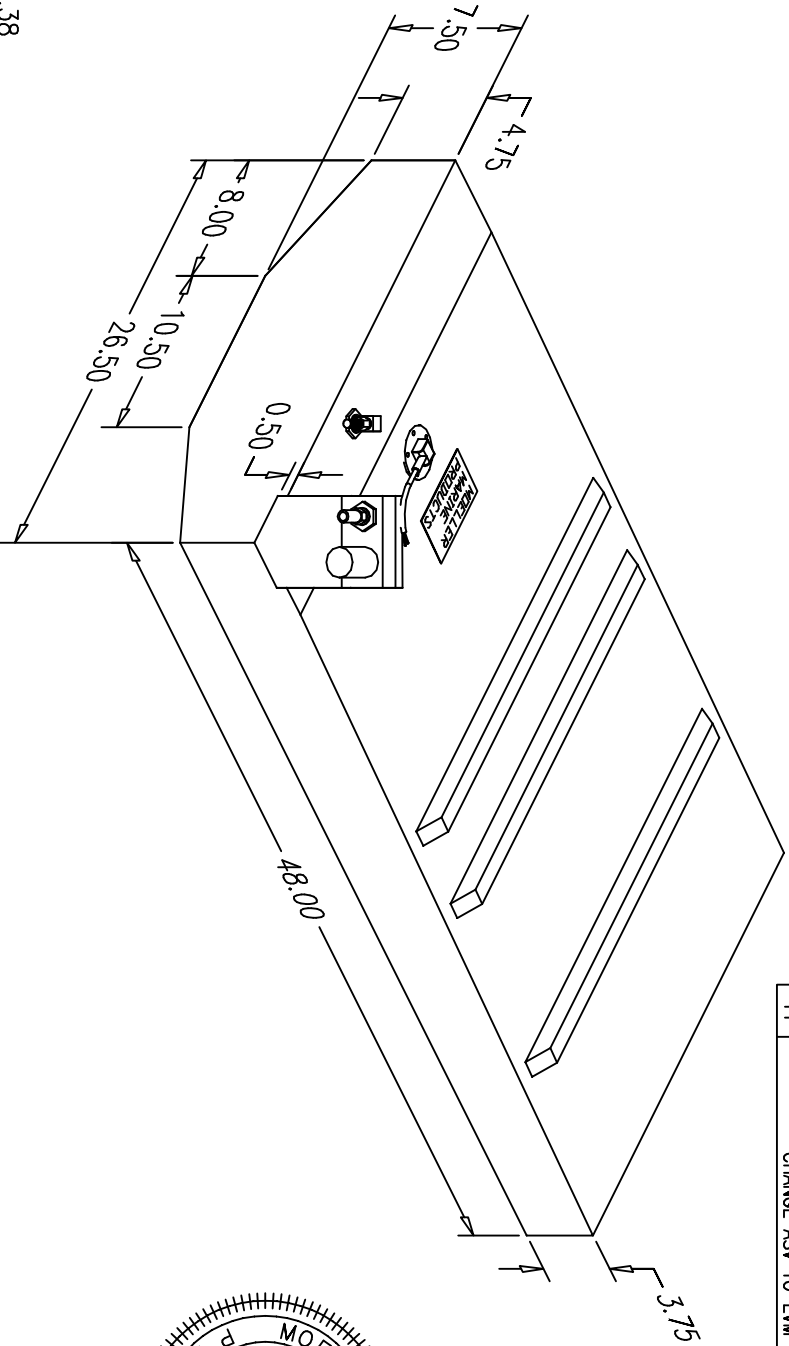


BILL of MATERIALS	
QTY.	DESCRIPTION
1	6.50" SS WEMA W/ AMP TERMINALS
1	3/8 NPT PICKUP W/ 3/8" ASV CAL TO 15 (EVM)
1	3/8 NPT INSERT W 5/8" BARB (VENT)
	MOLDED FILL
	OVERALL HEIGHT 9.25"

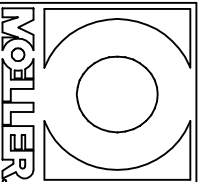


NO.	REVISION	DATE
1	RELOCATE SENDING UNIT AND LABEL	7/5/94
2	REPLACE 3/8" BARB W/ ANTI-SIPHON VALVE	10/13/94
3	REMOVE 1.00" IN HEIGHT FROM ONE END OF TANK	11/2/95
4	LOWER DOGHOUSE HEIGHT BY 0.2500"	11/28/95
5	REMOVE INT. RIBS, ADD EXT. RIBS	11/16/98
6	REPLACE STEWART WARNER W/ 6.50" WEMA	5/19/99
7	ADD AMP TERMINALS FOR WEMA	1/18/00
8	REPLACE WEMA WITH SS WEMA	9/13/02
9	CHANGE ASV	5/7/03
10	REPLACED MOLDED VENT W/ INSERT & 5/8" BARB	9/2/04
11	CHANGE ASV TO EVM STYLE	7/23/07

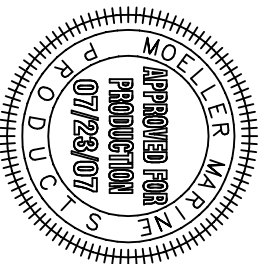
NOTE: ALL EDGES R0.38
UNLESS OTHERWISE NOTED.

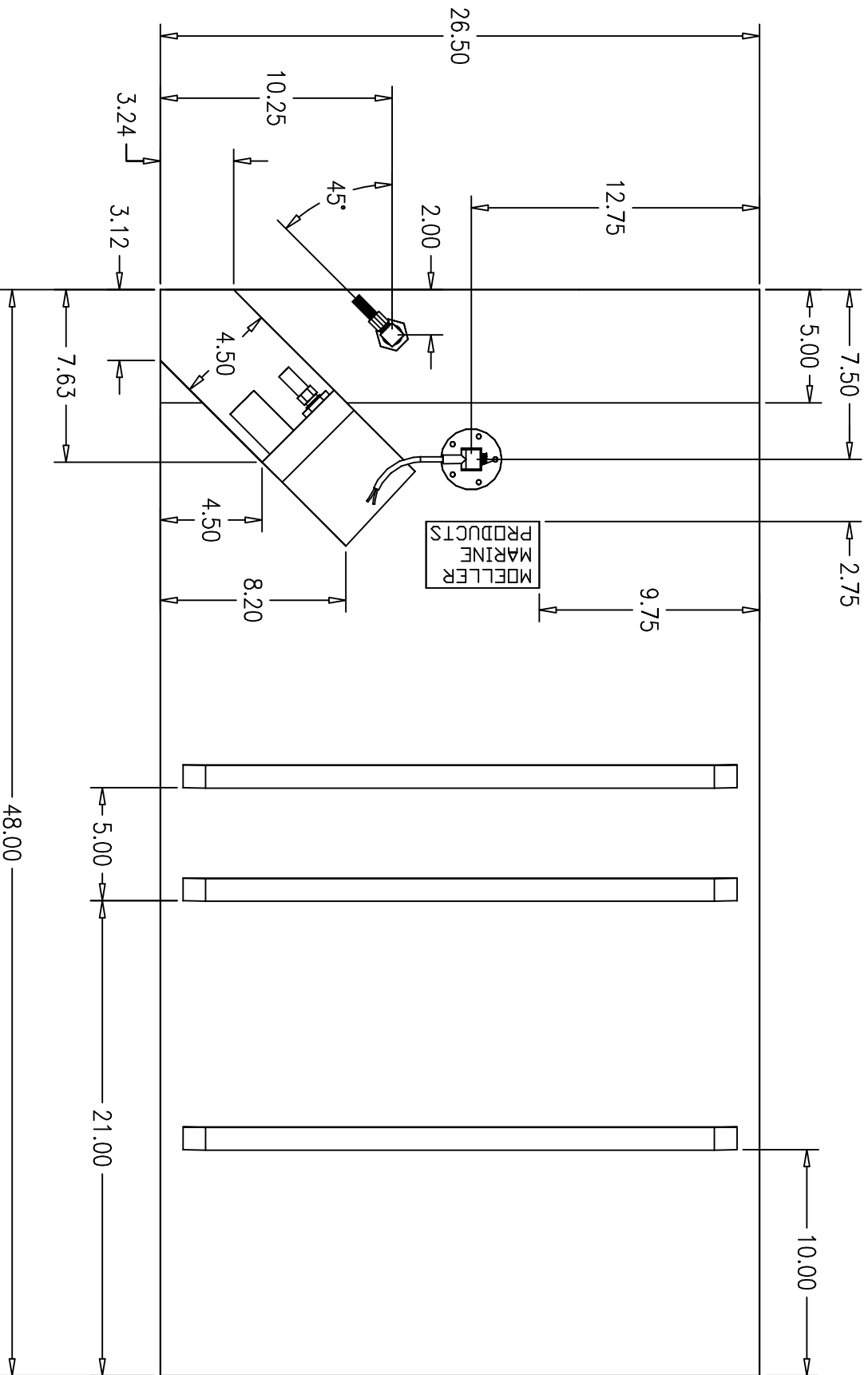
PAGE 1 OF 3

THIS DRAWING AND THE ATTACHED DRAWINGS (AND THE DATA SHOWN THEREON) IS CONFIDENTIAL AND PROPRIETARY AND SHALL NOT BE USED, DISCLOSED TO OTHERS, REPRODUCED FOR ANY PURPOSE EXCEPT FOR QUOTATION TO OR ORDER BY MOELLER MARINE PRODUCTS, INC. AND/OR ITS SUBSIDIARIES WITHOUT THEIR WRITTEN CONSENT TO THE USE OF SUCH DRAWINGS AND/OR DATA.



DESCRIPTION	31 GALLON FUEL TANK	
PART #	FT3117	COLOR NATURAL
MATERIAL	CROSSLINK POLYETHYLENE	
TOLERANCES	±1.5% UNLESS OTHERWISE NOTED	
WALL THK.	0.200" NOMINAL	DATE 7/23/07
DRAWN BY	MOELLER ENGINEERING	





NOTE: RIBS ARE: 1.00" WIDE, 1.00" TALL, 1.00" FROM EDGE, AND BEVELED 45° AT ENDS.
 RIB DIMENSIONS ARE ALIGNED W/ PLANE

