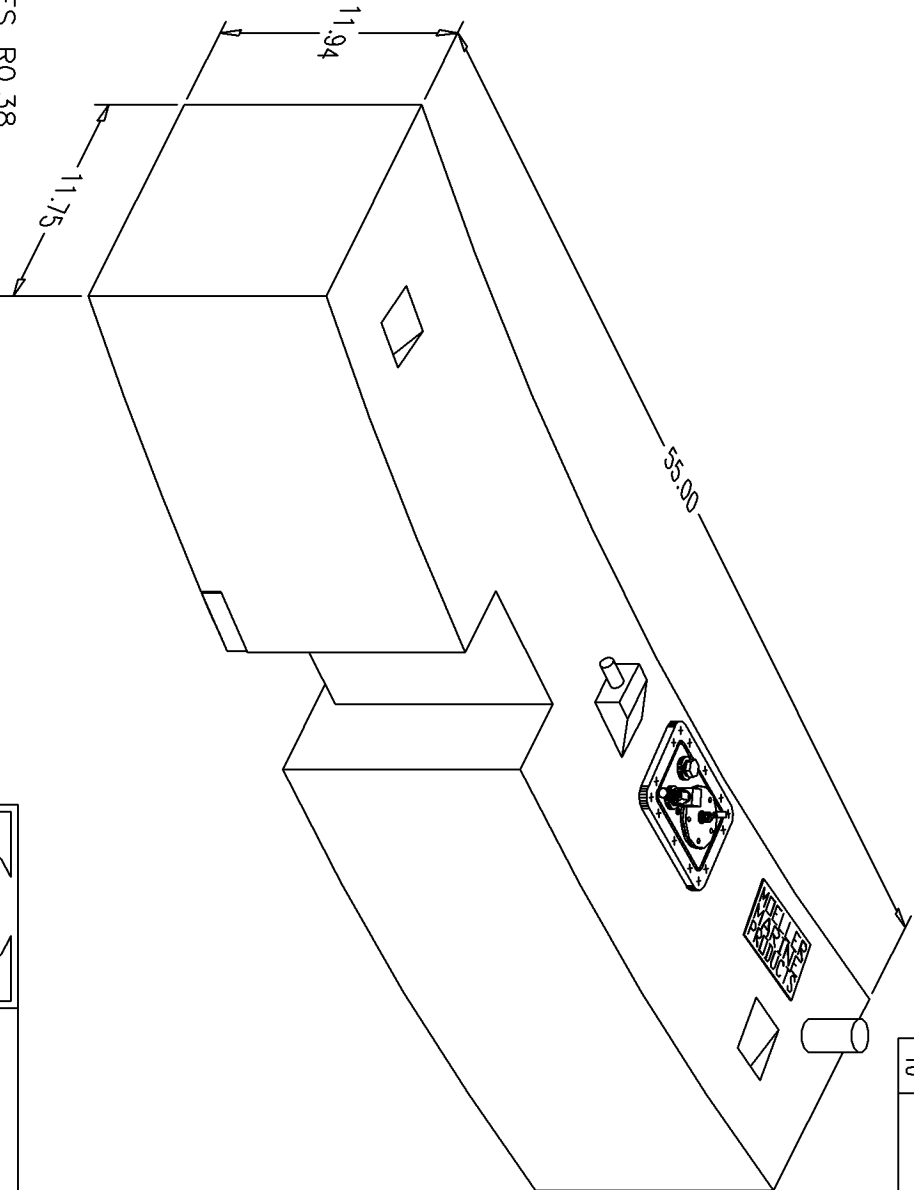


BILL of MATERIALS

Qty.	DESCRIPTION
1	EFI CLUSTER PLATE
1	ROCHESTER ECONOMY SENDER
1	PICKUP w/ 3/8 ANTI-SIPHON VALVE
4	HOOK POCKETS w/ BRACKETS
	MOLDED FILL & VENT
	OVERALL HEIGHT 14.44"

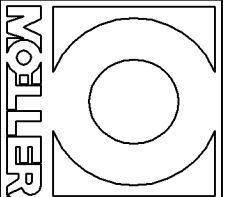


NO.	REVISION	DATE
5	CHANGE PICKUP ASSEMBLY, INCLUDE FILTERTEK FUEL FILTER	9/22/95
6	REMOVE FILTERTEK FUEL FILTER, ADD BELL SCREEN	8/22/96
7	CHANGE CLUSTER PLATE FROM EFI TO STANDARD, REMOVE SUMP, CHANGE SENDER TO STEWART WARNER,	
	CHANGE HOOK BRACKETS TO STD, CHANGE PICKUP TO ASV,	
8	REMOVE RETURN HEAD, AND PLUG CLUSTER PLATE. REMOVE RINA LABEL	1/17/97
9	REDUCE VENT SIZE FROM 0.75" TO 0.625"	05/07/98
10	ADD EFI CLUSTER PLATE	1/7/99
		2/11/03

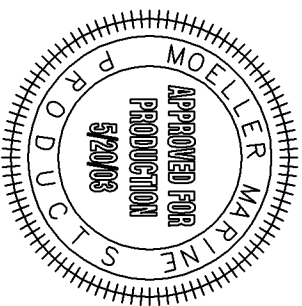
NOTE: ALL EDGES RO.38
UNLESS OTHERWISE NOTED

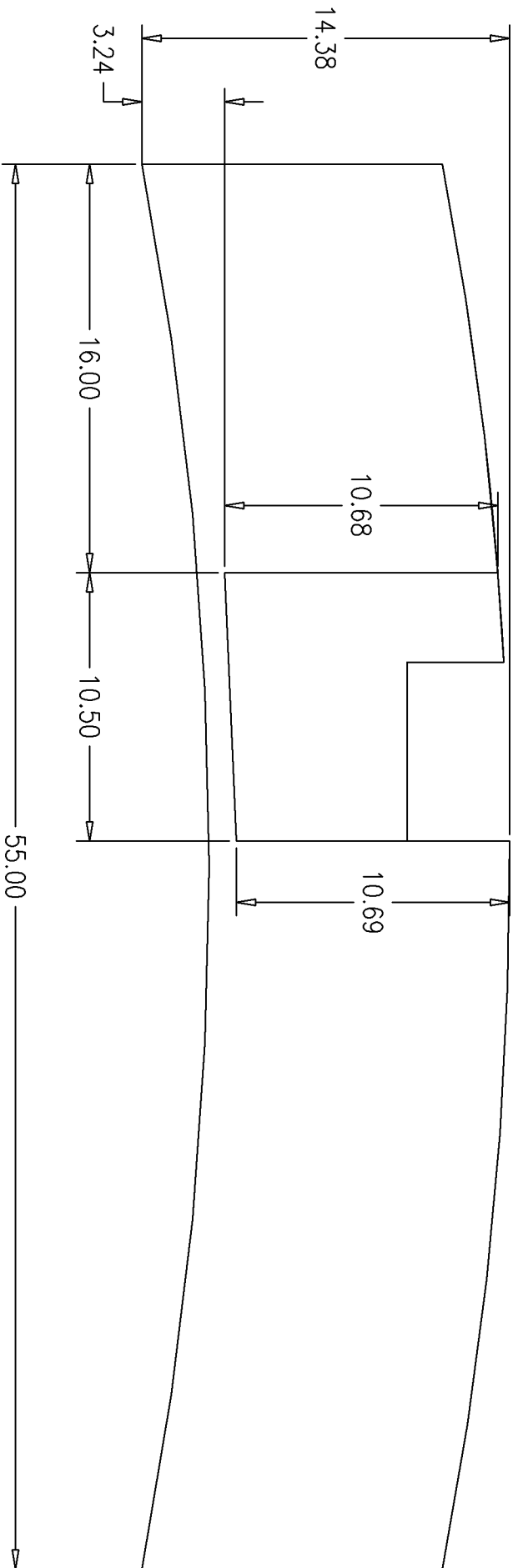
PAGE 1 OF 4

THIS DRAWING AND THE ATTACHED DRAWINGS (AND THE DATA SHOWN THEREON) IS CONFIDENTIAL AND PROPRIETARY AND SHALL NOT BE USED, DISCLOSED TO OTHERS, REPRODUCED FOR ANY PURPOSE EXCEPT FOR QUOTATION TO OR ORDER BY MOELLER MARINE PRODUCTS, INC. AND/OR ITS SUBSIDIARIES WITHOUT THEIR WRITTEN CONSENT TO THE USE OF SUCH DRAWINGS AND/OR DATA.

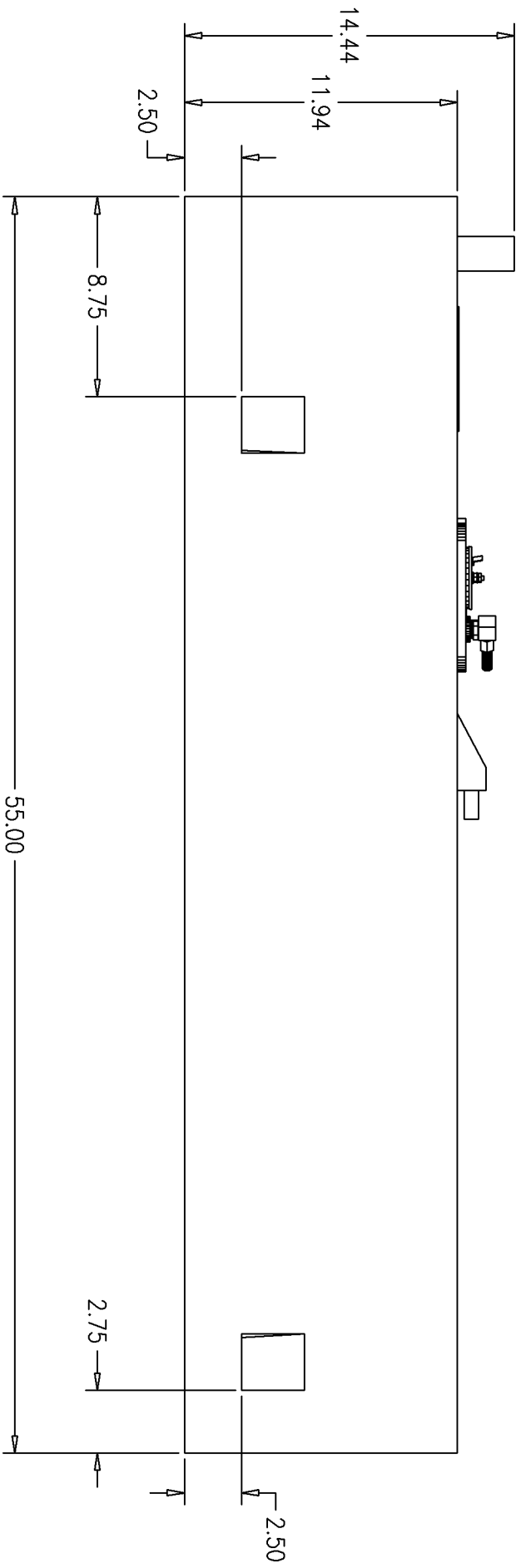


DESCRIPTION	30 GALLON FUEL TANK
PART #	FT3010
MATERIAL	CROSSLINK POLYETHYLENE
TOLERANCES	±1.5% UNLESS OTHERWISE NOTED
WALL THK.	0.200"
DRAWN BY	MOELLER ENGINEERING
	DATE 2/11/03





BOTTOM VIEW
2/11/03



BACK VIEW
 2/11/03

PAGE 4
 FT3010-R10