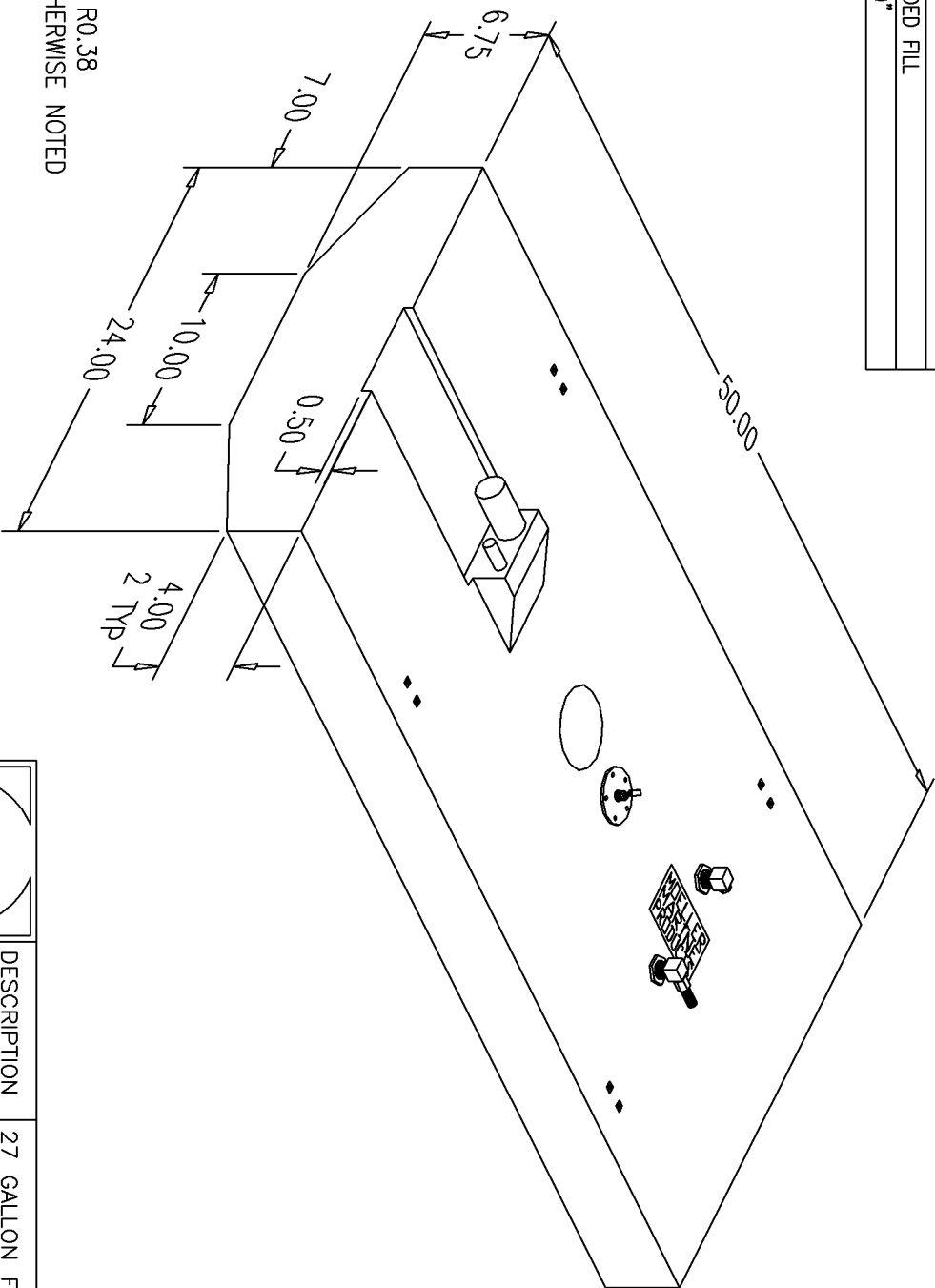


BILL of MATERIALS

Qty.	DESCRIPTION
1	ROCHESTER ECONOMY SENDER
1	3/8 NPT PICKUP w/ 3/8" BARB (5.60 TUBE)
1	3/8 NPT PICKUP w/ 1/4 NPT ALUM. PLUG (5.60 TUBE)
8	10-24 ALUMINUM INSERTS
	Ø063" MOLDED VENT
	Ø1.50" X 2.75" MOLDED FILL
	OVERALL HEIGHT 8.50"

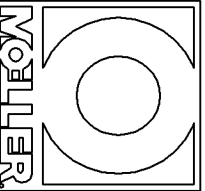
NO.	REVISION	DATE
1	MOVE FILL/VENT DOGHOUSE	7/12/02
2	REMOVE VENT, MOVE PICKUP, ADD PLUGGED PICKUP	10/8/04
3	MOVE DOGHOUSE & ADD RECESS	5/23/05
4	MOVE LABEL, ADD (8) 10-24 ALUM. INSERTS	8/9/05
5	MOVE LABEL, PICKUPS, & SENDER.	2/21/06



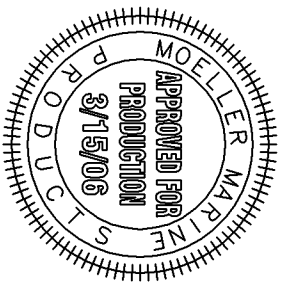
NOTE: ALL EDGES R0.38
UNLESS OTHERWISE NOTED

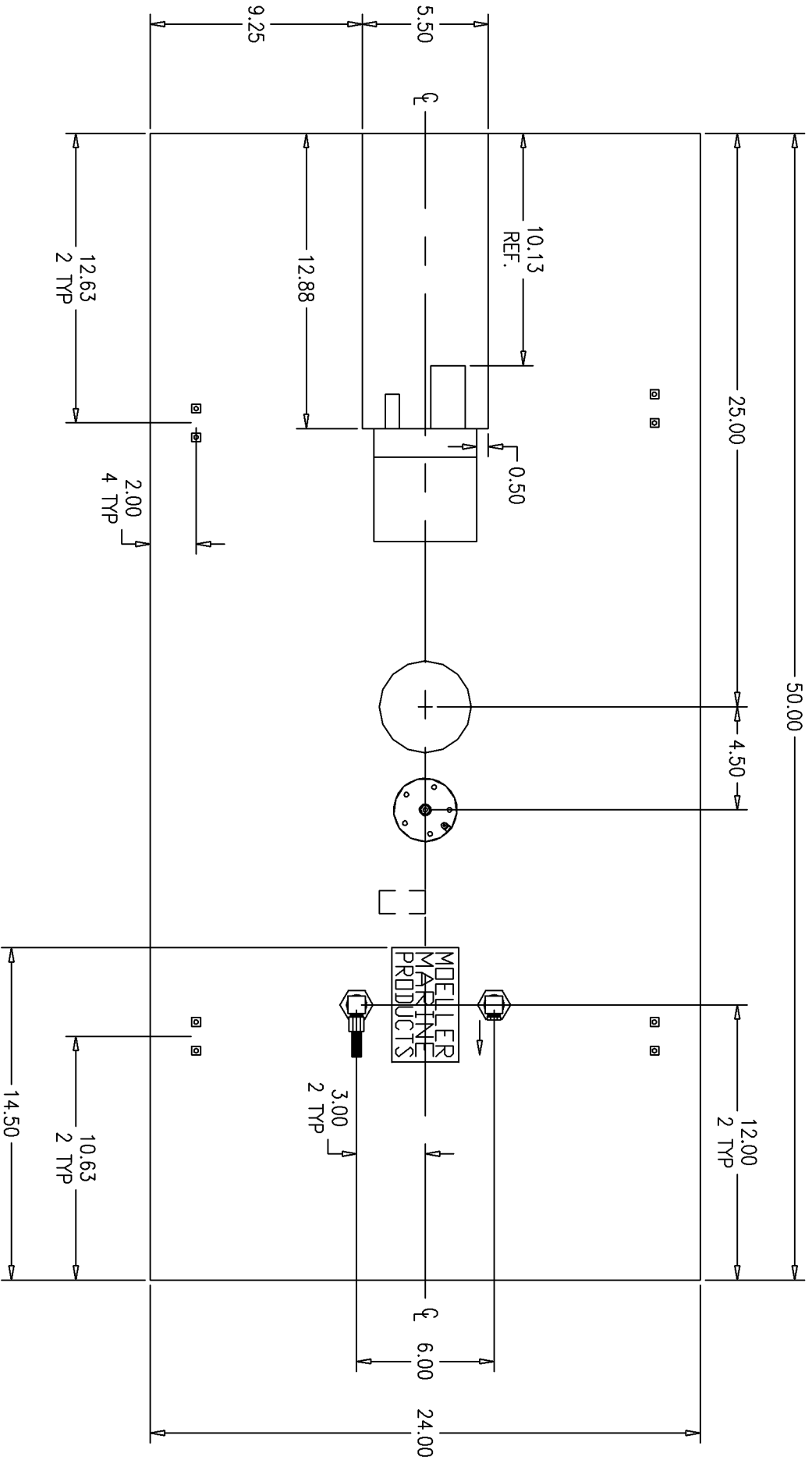
PAGE 1 OF 2

THIS DRAWING AND THE ATTACHED DRAWINGS (AND THE DATA SHOWN THEREON) IS CONFIDENTIAL AND PROPRIETARY AND SHALL NOT BE USED, DISCLOSED TO OTHERS, REPRODUCED FOR ANY PURPOSE EXCEPT FOR QUOTATION TO OR ORDER BY MOELLER MARINE PRODUCTS, INC. AND/OR ITS SUBSIDIARIES WITHOUT THEIR WRITTEN CONSENT TO THE USE OF SUCH DRAWINGS AND/OR DATA.



DESCRIPTION	27 GALLON FUEL TANK		
PART #	FT2740	COLOR	NATURAL
MATERIAL	CROSSLINK POLYETHYLENE		
TOLERANCES	±1.5% UNLESS OTHERWISE NOTED		
WALL THK.	0.200" NOMINAL	DATE	2/21/06
DRAWN BY	MOELLER ENGINEERING		





NOTE: CONE IS $\phi 4.00$ AT TOP AND $\phi 5.00$ AT BOTTOM.
 DOGHOUSE IS 4.93 LONG, 4.50 WIDE, 1.75 TALL, HAS A 1.25 TOP FLAT. AND IS CENTERED ON TANK.
 RECESS IN FRONT OF DOGHOUSE IS 0.50 DEEP.