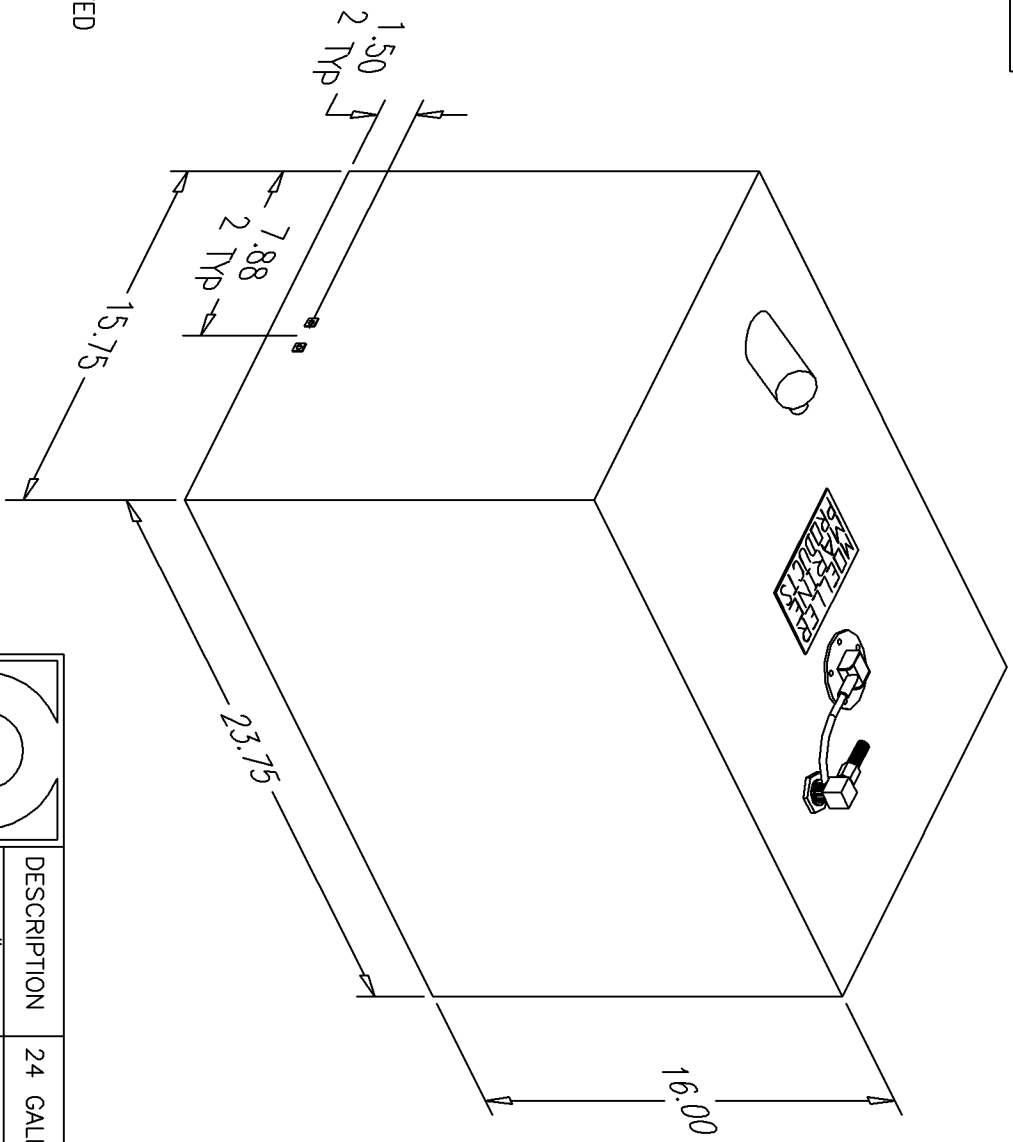


BILL of MATERIALS	
Qty.	DESCRIPTION
1	15.00" SS WEMA SENDER
1	PICKUP W/ 3/8" HOSE BARB
2	SMALL L-BRACKETS W/ INSERTS (ZIP-TIE)
	MOLDED FILL AND VENT
	OVERALL HEIGHT 19.01"

NO.	REVISION	DATE
1	REPLACE STEWART WARNER W/ WEMA SENDER.	10/16/98
2	REPLACE WEMA WITH SS WEMA	12/2/02
3	REPLACE 15.50" SS WEMA W/ 15.00" SS WEMA.	3/31/03

NOTE: ATTACH BRACKETS TO THE TOP OF TANK.

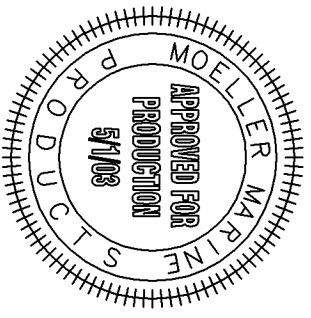


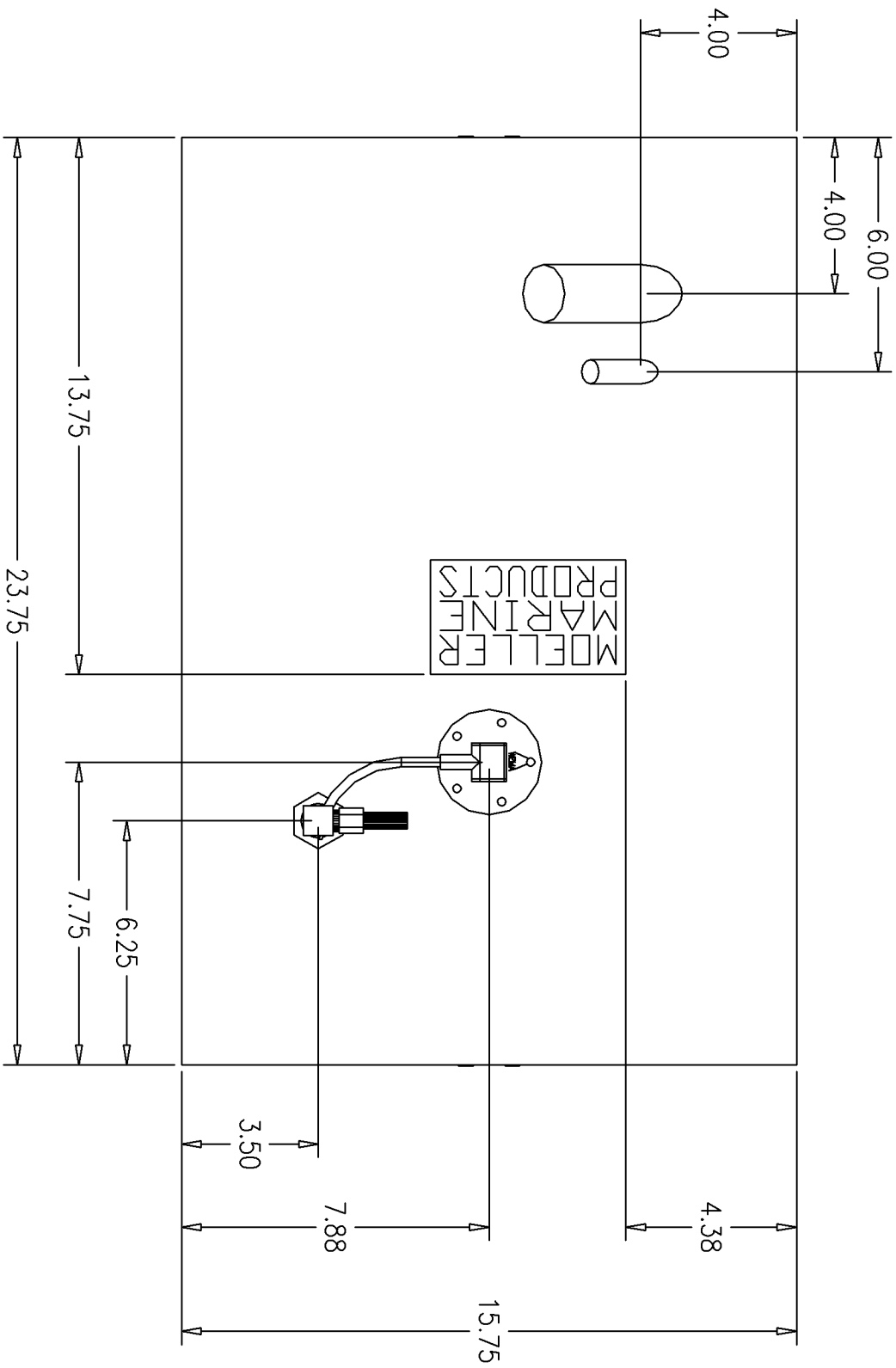
NOTE: ALL EDGES R0.38 UNLESS OTHERWISE NOTED

THIS DRAWING AND THE ATTACHED DRAWINGS (AND THE DATA SHOWN THEREON) IS CONFIDENTIAL AND PROPRIETARY AND SHALL NOT BE USED, DISCLOSED TO OTHERS, REPRODUCED FOR ANY PURPOSE EXCEPT FOR QUOTATION TO OR ORDER BY MOELLER MARINE PRODUCTS, INC. AND/OR ITS SUBSIDIARIES WITHOUT THEIR WRITTEN CONSENT TO THE USE OF SUCH DRAWINGS AND/OR DATA.



DESCRIPTION	24 GALLON FUEL TANK		
PART #	FT2442	COLOR	NATURAL
MATERIAL	CROSSLINK POLYETHYLENE		
TOLERANCES	±1.5% UNLESS OTHERWISE NOTED		
WALL THK.	0.200"	DATE	3/31/03
DRAWN BY	MOELLER ENGINEERING		





NOTE: FILL IS 2.75 LONG ON SHORT SIDE, AND ANGLED 45° FROM HORIZONTAL.
 VENT IS 1.50 LONG ON SHORT SIDE, AND ANGLED 45° FROM HORIZONTAL.