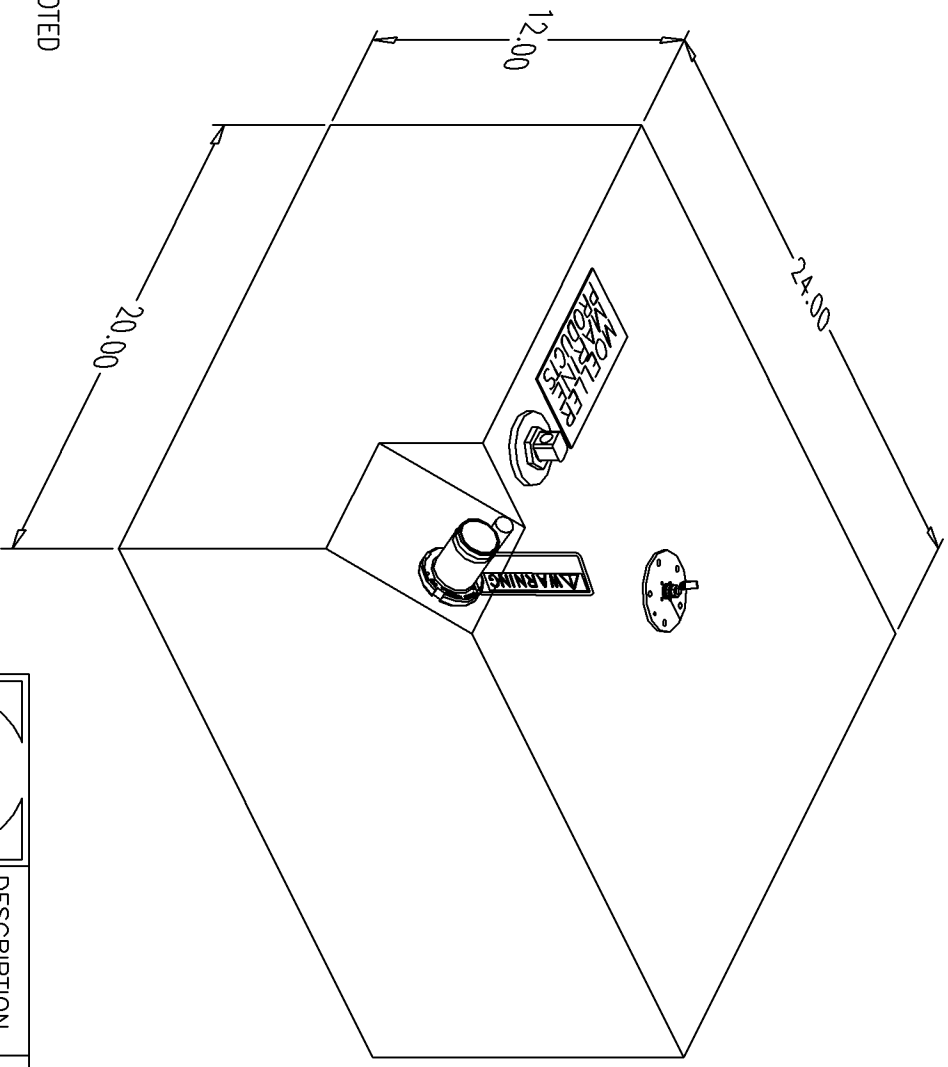


BILL of MATERIALS

| Qty. | DESCRIPTION |
|------|------------------------------------|
| 1 | ROCHESTER SENDING UNIT, DBL PLATED |
| 1 | ALUM. PL3 PICKUP W/O BARB |
| 1 | Ø0.63" MOLDED VENT |
| 1 | Ø1.50" ALUM. FILL W/ GROUND TAG |
| | OVERALL HEIGHT 13.21" |

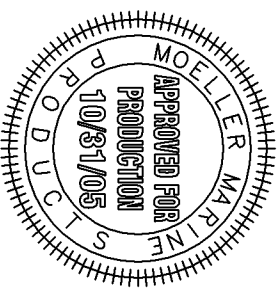
| NO. | REVISION | DATE |
|-----|--|----------|
| 1 | REPLACED PICKUP W/ PL3 SERIES, MOLDED FILL W/ INSERT, ADD Ø2.50" BOSS | 10/31/05 |



NOTE: ALL EDGES R0.38
UNLESS OTHERWISE NOTED

PAGE 1 OF 3

THIS DRAWING AND THE ATTACHED DRAWINGS (AND THE DATA SHOWN THEREON) IS CONFIDENTIAL AND PROPRIETARY AND SHALL NOT BE USED, DISCLOSED TO OTHERS, REPRODUCED FOR ANY PURPOSE EXCEPT FOR QUOTATION TO OR ORDER BY MOELLER MARINE PRODUCTS, INC. AND/OR ITS SUBSIDIARIES WITHOUT THEIR WRITTEN CONSENT TO THE USE OF SUCH DRAWINGS AND/OR DATA.



| | | | |
|------------|--|------------------------------|------------------------------|
| | | DESCRIPTION | 23 GALLON FUEL TANK (032623) |
| | | PART # | FT2399 |
| MATERIAL | | CROSSLINK POLYETHYLENE | COLOR NATURAL |
| TOLERANCES | | ±1.5% UNLESS OTHERWISE NOTED | |
| WALL THK. | | 0.200" NOMINAL | DATE 10/31/05 |
| DRAWN BY | | MOELLER ENGINEERING | |