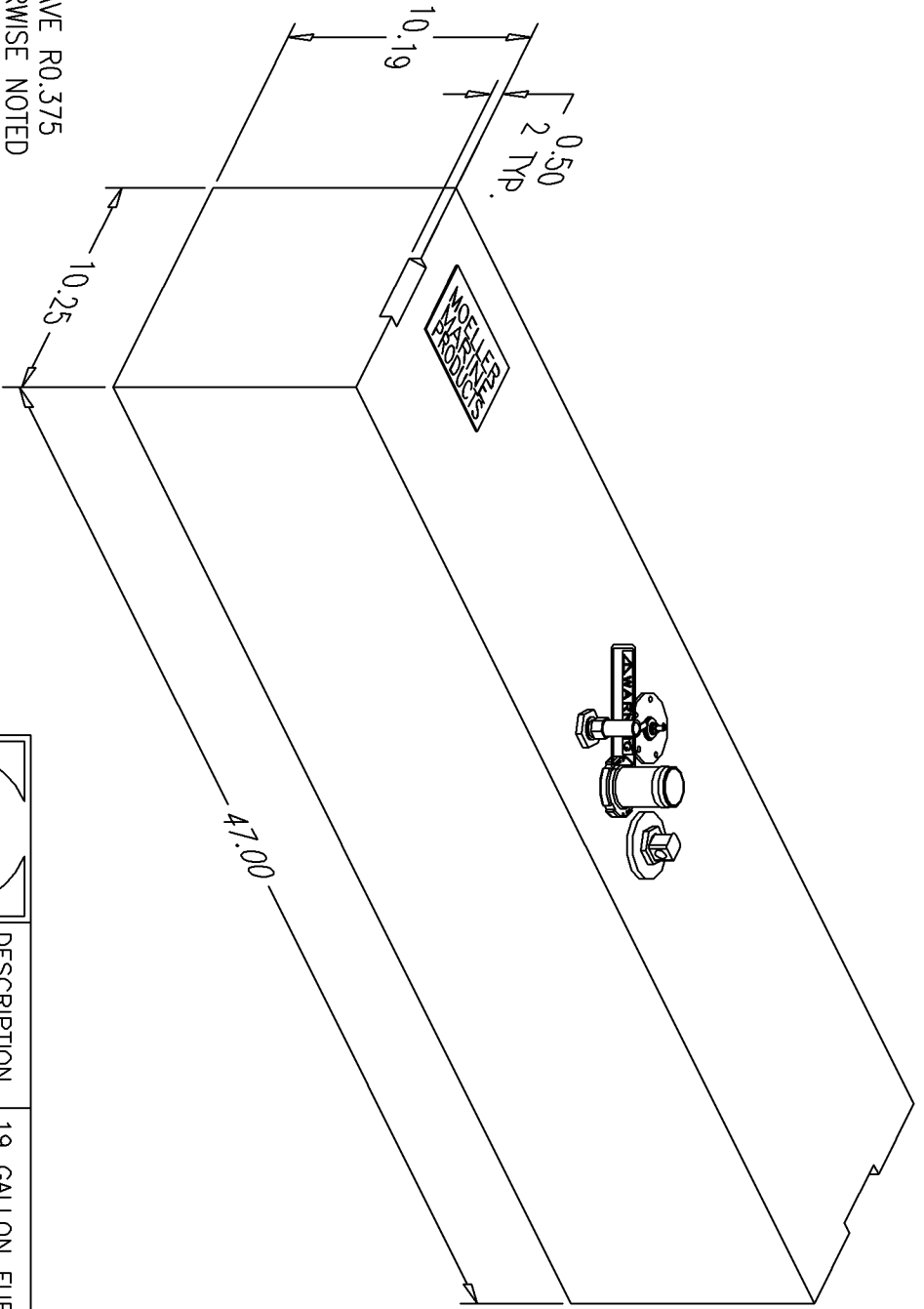


BILL of MATERIALS

Qty.	DESCRIPTION
1	PRIME SENDING UNIT 9.30"
1	ALUM. PL3 PICKUP W/O BARB
1	3/8 NPT INSERT W/ 5/8 BARB (VENT)
1	Ø1.50" ALUM. FILL W/ GROUND TAG
	OVERALL HEIGHT 12.69"

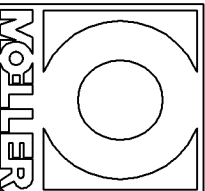
NO.	REVISION	DATE



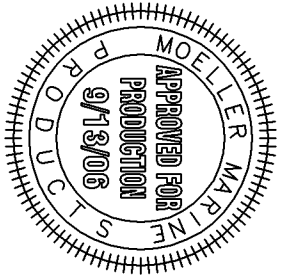
NOTE: ALL EDGES HAVE R0.375
UNLESS OTHERWISE NOTED

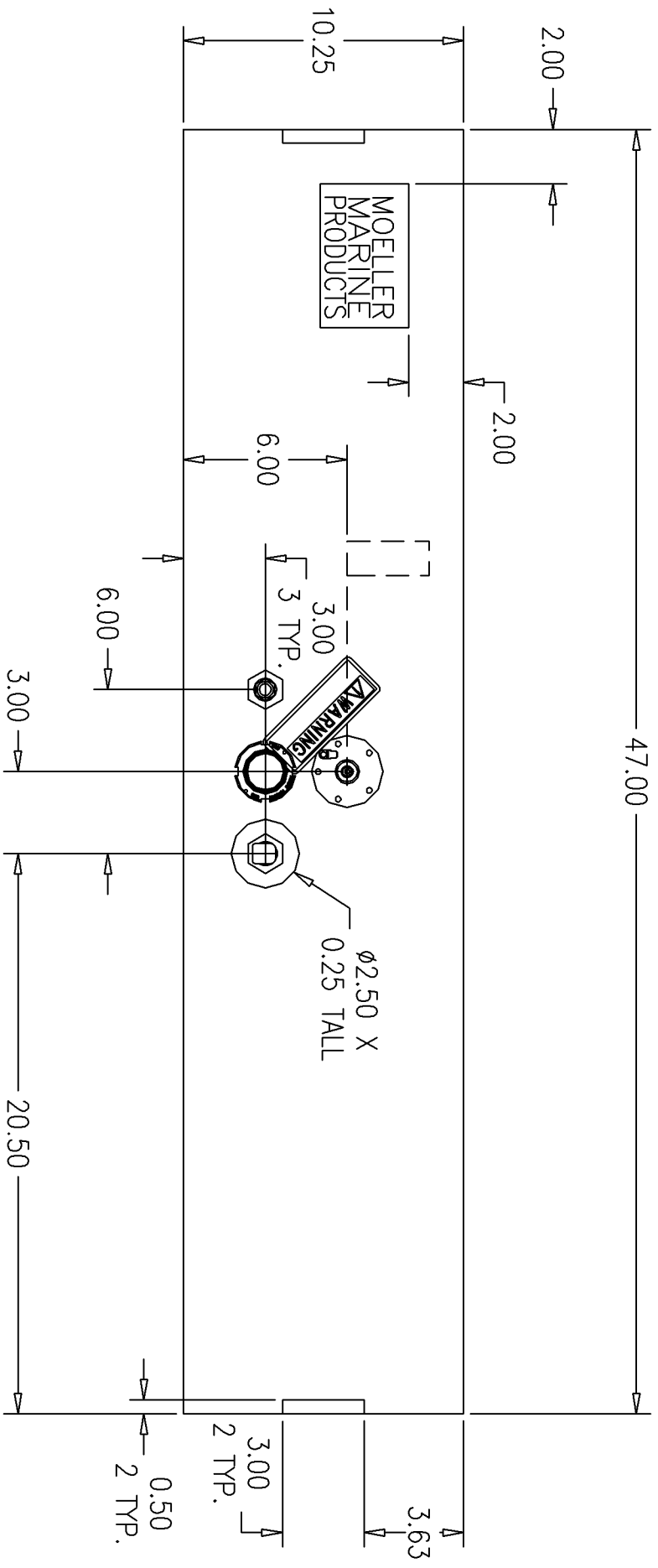
PAGE 1 OF 2

THIS DRAWING AND THE ATTACHED DRAWINGS (AND THE DATA SHOWN THEREON) IS CONFIDENTIAL AND PROPRIETARY AND SHALL NOT BE USED, DISCLOSED TO OTHERS, REPRODUCED FOR ANY PURPOSE EXCEPT FOR QUOTATION TO OR ORDER BY MOELLER MARINE PRODUCTS, INC. AND/OR IT'S SUBSIDIARIES WITHOUT THEIR WRITTEN CONSENT TO THE USE OF SUCH DRAWINGS AND/OR DATA.



DESCRIPTION	19 GALLON FUEL TANK (032719)		
PART #	FT1997-1	COLOR	NATURAL
MATERIAL	CROSSLINK POLYETHYLENE		
TOLERANCES	±1.5% UNLESS OTHERWISE NOTED		
WALL THK.	0.200"	DATE	9/13/06
DRAWN BY	MOELLER ENGINEERING		





NOTE: STRAP LOCATIONS ARE BEVELED 45°