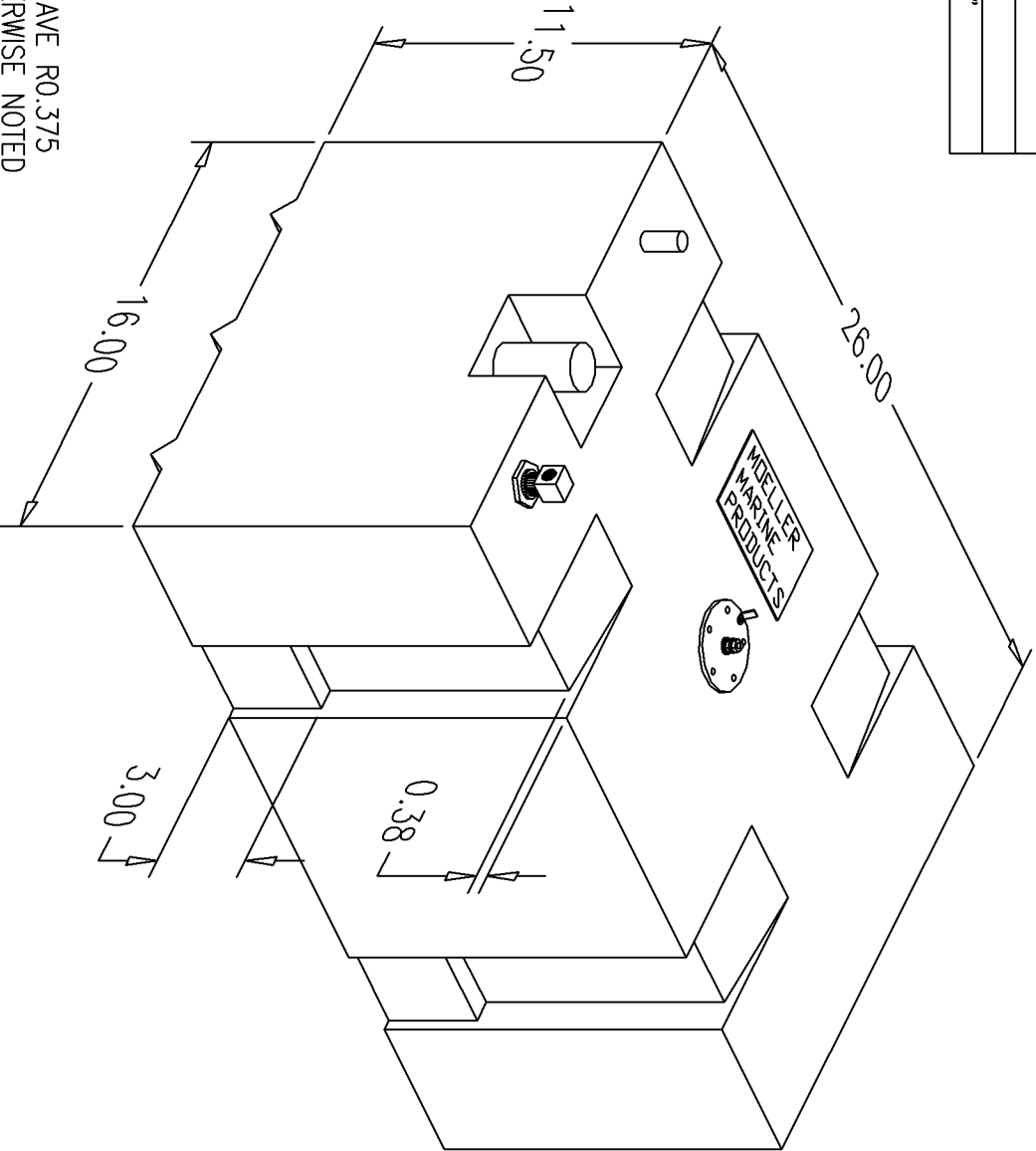


BILL of MATERIALS

Qty.	DESCRIPTION
1	ROCHESTER ECONOMY SENDER
1	PICKUP w/O BARB
	MOLDED FILL AND VENT
	OVERALL TANK HEIGHT 13.50"

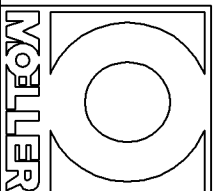
NO.	REVISION	DATE



NOTE: ALL EDGES HAVE R0.375
UNLESS OTHERWISE NOTED

PAGE 1 OF 3

THIS DRAWING AND THE ATTACHED DRAWINGS (AND THE DATA SHOWN THEREON) IS CONFIDENTIAL AND PROPRIETARY AND SHALL NOT BE USED, DISCLOSED TO OTHERS, REPRODUCED FOR ANY PURPOSE EXCEPT FOR QUOTATION TO OR ORDER BY MOELLER MARINE PRODUCTS, INC. AND/OR ITS SUBSIDIARIES WITHOUT THEIR WRITTEN CONSENT TO THE USE OF SUCH DRAWINGS AND/OR DATA.



DESCRIPTION	18 GALLON FUEL TANK
PART #	FT1899
MATERIAL	CROSSLINK POLYETHYLENE
COLOR	GREY
WALL THK.	0.200
DRAWN BY	MOELLER ENGINEERING
DATE	8/11/94

