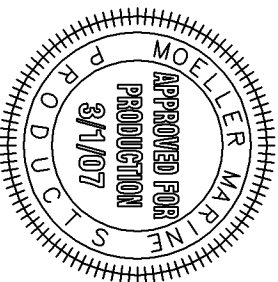
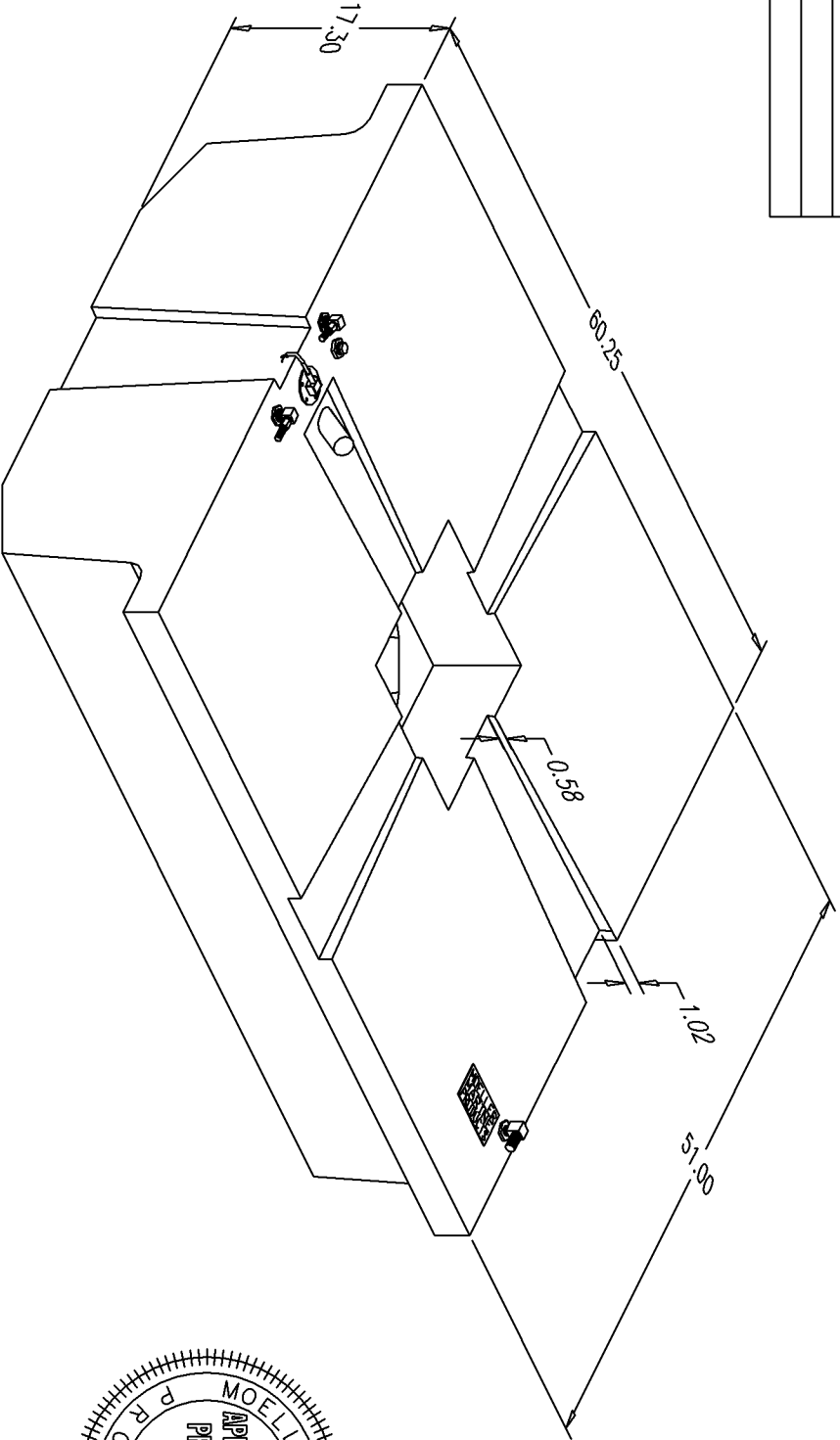


# BILL of MATERIALS

Qty.	DESCRIPTION
1	16.00" SS WEMA SENDER W/ TERMINALS
2	1/2 NPT SS PICKUPS W/ 3/8" BRASS BARBS
1	1/2" NPT INSERT W/ 1/2 NPT ALUM. PLUG
1	VENT W/ 5/8 BARB
	MOLDED FILL
	OVERALL HEIGHT 19.41"

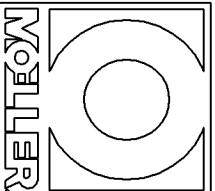
NO.	REVISION	DATE
1	REPLACE WEMA WITH SS WEMA	11/19/02
2	MOVED & REPLACE MOLDED VENT W/ VENT W/ 5/8 BARB	2/9/07



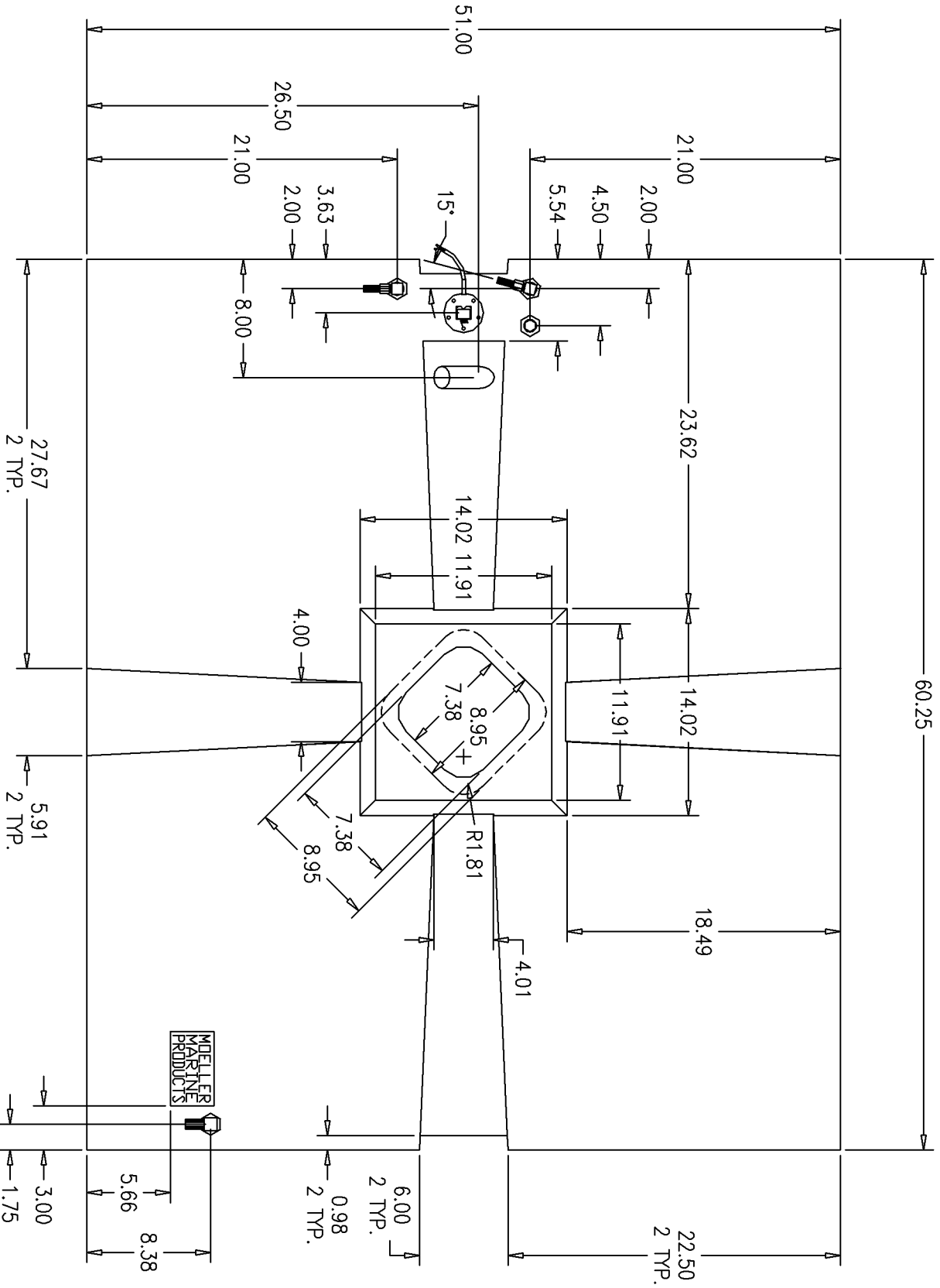
NOTE: ALL EDGES R0.38  
UNLESS OTHERWISE NOTED

PAGE 1 OF 3

THIS DRAWING AND THE ATTACHED DRAWINGS (AND THE DATA SHOWN THEREON) IS CONFIDENTIAL AND PROPRIETARY AND SHALL NOT BE USED, DISCLOSED TO OTHERS, REPRODUCED FOR ANY PURPOSE EXCEPT FOR QUOTATION TO OR ORDER BY MOELLER MARINE PRODUCTS, INC. AND/OR ITS SUBSIDIARIES WITHOUT THEIR WRITTEN CONSENT TO THE USE OF SUCH DRAWINGS AND/OR DATA.



DESCRIPTION	163 GALLON FUEL TANK	
PART #	FT16301	COLOR NATURAL
MATERIAL	CROSSLINK POLYETHYLENE	
TOLERANCES	±1.5% UNLESS OTHERWISE NOTED	
WALL THK.	0.285" NOMINAL	DATE 2/9/07
DRAWN BY	MOELLER ENGINEERING	



NOTE: FILL IS 2.75 LONG ON SHORT SIDE & ANGLED 45°

